

MAILROOM FURNITURE

TAMPER EVIDENT BAGS

SECURE STORAGE

SORT UNITS

CARTS

SECURE MAILBOXES



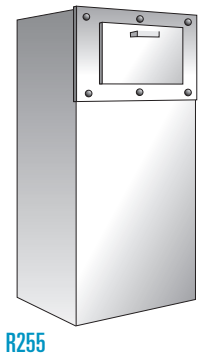
Mailroom Matters 15



Contents

	Page number		Page number
Mailroom	2 - 29	Bags	30 - 39
Collection Boxes	2	Product Information	30
Mailboxes	3	Unique Bag Sealing System	31
Aspect Furniture Line	4 - 9	Mailing Pouches	32
Silverstream Furniture Line	10 - 15	Internal Mail	33
Sattelite Mail Stations	16 - 19	Office Storage & Transport Bags	34
File & Store Mail Stations	20 - 21	Cash / Security Bags	35
Case Work Cabinets	22 - 23	Bank / Processing Bags	36
Large Volume Sorters	24	Cheque Processing	37
Modular Shelving	25	Personal Property Bags	37
Carts	26 - 27	Health Care Bags	38
Bulk Carts	28	Custom Bag Service	39
Mailroom Accessories	29		

Collection Boxes



Also Available R291P
Collection Box R291 on
a Pedestal Stand

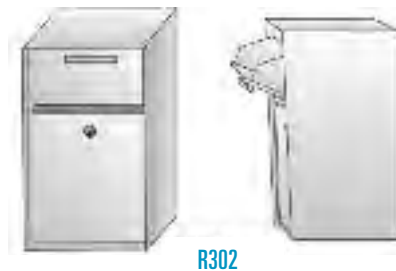


R210 Drop Box
R306 Book or Mail Drop
Other Models and Custom Chutes Available - Aluminum or Stainless Steel

Pedestals Available



R227 Collection Box
R225 Collection Box Recessed



R302 Drop Box with Chute
Three sizes available

MAILBOXES • DISTRIBUTION BOXES • DROP BOXES • CHUTES
COLLECTION BOXES • PRIVATE MAILBOXES • PEDESTAL AND WALL MOUNT

All our mail boxes are built to accommodate your specific requirements
Front Load, Rear Load, Wall Mount and Cabinet Style Units available
Just choose the style and door size and we will provide a quotation to fit your needs

3 Digit Cambi Com Lock

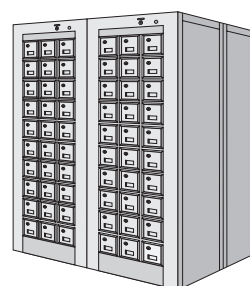
12" x 12" Door

12" x 6" Door

Door with Mail Slot

12" x 3" Door

6" x 12" Door



Front Opening Cabinet Style

6" x 6" Door

6" x 3" Door



101	201
102	202
103	203
104	204
105	205
106	206
107	207
108	208
109	209
110	210
111	211
112	212

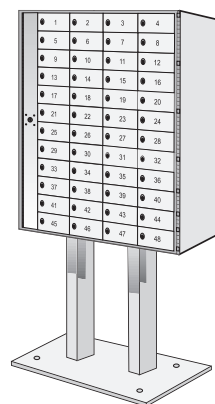
Rearload



6000

101	201
102	202
103	203
104	204
105	205
106	206
107	207
108	208
109	209
110	210
111	211
112	212

9335



9330P

MALROOM FURNITURE - ASPECT LINE

The Aspect Line has been created for when appearance is as important as function.

Using premium materials and designed with over 25 years of expertise in the mailroom, the line combines good looks with robust construction.



L444



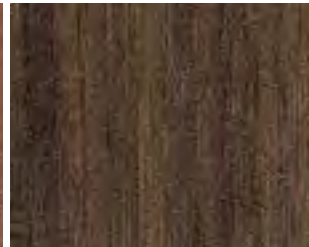
Chocolate Pear Tree

L420



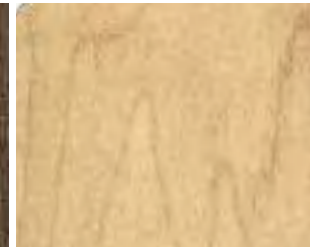
Summer Flame

512



Bio Bamboo

687



Bryan Maple



Candlelight

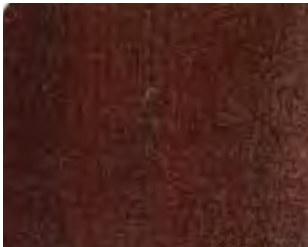


L421



Port Maple

765



Finesse

745



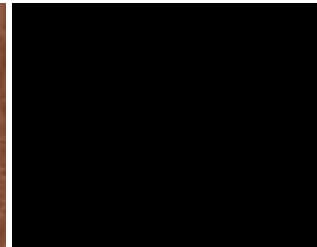
Regal Cherry

978



Black

888





Console With Shelf & Locking Doors				
REF	Width	Depth	Height 1	Height 2
ACU1	36"	30"	30"	36"
ACU2	48"	30"	30"	36"
ACU3	60"	30"	30"	36"
ACU4	72"	30"	30"	36"



Open Console With Shelf				
REF	Width	Depth	Height 1	Height 2
AOCU1	36"	30"	30"	36"
AOCU2	48"	30"	30"	36"
AOCU3	60"	30"	30"	36"
AOCU4	72"	30"	30"	36"



Desk With Lockable Pedestal				
REF	Width	Depth	Height 1	Height 2
APD1	36"	30"	30"	36"
APD2	48"	30"	30"	36"
APD3	60"	30"	30"	36"
APD4	72"	30"	30"	36"



Computer Work Station				
With CPU Holder, Roll out Keyboard tray and Mobile Pedestal				
Ref	Width	Depth	Height 1	Height 2
ADC3	60	30	30	36
ADC4	72	30	30	36



Optional Stainless Steel Top	
REF	Size W x H
SST1	36 x 30"
SST2	48 x 30"
SST3	60 x 30"
SST4	72 x 30"



Cable Tidy	
REF	ACT



Casters	
*2 lockable / 2 standard	
REF	CZLS

ALL UNITS CAN BE MADE TO YOUR SPECIFIC REQUIREMENTS



Open Bench with Shelf				
REF	Width	Depth	Height 1	Height 2
APTS1	36"	30"	30"	36"
APTS2	48"	30"	30"	36"
APTS3	60"	30"	30"	36"
APTS4	72"	30"	30"	36"



Open Bench				
REF	Width	Depth	Height 1	Height 2
APT1	36"	30"	30"	36"
APT2	48"	30"	30"	36"
APT3	60"	30"	30"	36"
APT4	72"	30"	30"	36"



Sort Unit Riser			
*Raised shelf with 4 legs			
REF	Width	Depth	Height
ASR2	25"	15 1/2"	10"
ASR3	36"	15 1/2"	10"
ASR4	48"	15 1/2"	10"
ASR5	60"	15 1/2"	10"



Corner Unit		
REF	W	D x H
AIU-30"	30	x 30 x 30"
AIU-36"	30	x 30 x 36"



Dump Table with Bottom Shelf				
	Ref	Size WxDx	Height 1	Height 2
Stationary	ADTS1	36x30	30	36
Mobile	ADTSM1	36x30	30	36
Stationary	ADTS2	48x30	30	36
Mobile	ADTSM2	48x30	30	36
Stationary	ADTS3	60x30	30	36
Mobile	ADTSM3	60x30	30	36



Sort Unit Base Stand			
*Custom heights available			
REF	Width	Depth	Height
ABS3	36"	15 1/2"	20"
ABS4	48"	15 1/2"	20"
ABS5	60"	15 1/2"	20"



Mobile Lockable Pedestal		
*2 drawer pedestal		
REF	W	D x H
AML1	16 1/2	x 19 x 22"



Mail Drop Chute	
Ref	AMDC



wooden shelves

NEW COLOURS

Colour Options

- 1 Majestic Walnut
- 2 Swiss Pear
- 3 Portland Cherry
- 4 Chocolate Maple
- 5 Red Apple
- 6 Java Glow
- 7 Honey Apple
- 8 White
- 9 Bleached Maple
- 10 Natural Maple



3 Column Unit

*With 15 openings
*Internal compartment width 11"

REF	Width	Depth	Height
A3CW18	36"	15 1/4"	19 1/2"
A3CW36	36"	15 1/4"	37 1/2"
A3CW42	36"	15 1/4"	43 1/2"

* includes 12 wooden shelves



4 Column Unit

*With 20 openings
*Internal compartment width 11"

REF	Width	Depth	Height
A4CW18	48"	15 1/4"	19 1/2"
A4CW36	48"	15 1/4"	37 1/2"
A4CW42	48"	15 1/4"	43 1/2"

* includes 16 wooden shelves



5 Column Unit

*With 25 openings
*Internal compartment width 11"

REF	Width	Depth	Height
A5CW18	60"	15 1/4"	19 1/2"
A5CW36	60"	15 1/4"	37 1/2"
A5CW42	60"	15 1/4"	43 1/2"

* includes 20 wooden shelves



Single Column

*With 5 openings
*Internal compartment width 11"

REF	Width	Depth	Height
A1CW18	12"	15 1/4"	19 1/2"
A1CW36	12"	15 1/4"	37 1/2"
A1CW42	12"	15 1/4"	43 1/2"

* includes 4 wooden shelves



Wooden Shelves

*Pack of 5 wooden shelves

REF	Width	Depth	Height
ASW	11"	15"	5/8"



Through Sort Unit

Ref	Width	Depth	Height	
AT3CW36	15 mail slots	36	15.25	37.5"
AT3CW42	15 mail slots	36	15.25	43.5"
AT4CW36	20 mail slots	48	15.25	37.5"
AT4CW42	20 mail slots	48	15.25	43.5"
AT5CW36	25 mail slots	60	15.25	37.5"
AT5CW42	25 mail slots	60	15.25	43.5"



Label Strips

*10 per pack

REF	ALS10
-----	-------

- The Aspect line combines a smart appearance with a robust construction.
- Easily adjustable shelves are available in wood or acrylic.
- All units can be made to your specific requirements - please call for details.



3 Column Unit

*With 15 openings
*Internal compartment width 11"

REF	Width	Depth	Height
A3CA18	36"	15 1/4"	19 1/2"
A3CA36	36"	15 1/4"	37 1/2"
A3CA42	36"	15 1/4"	43 1/2"

* includes 12 acrylic shelves

4 Column Unit

*With 20 openings
*Internal compartment width 11"

REF	Width	Depth	Height
A4CA18	48"	15 1/4"	19 1/2"
A4CA36	48"	15 1/4"	37 1/2"
A4CA42	48"	15 1/4"	43 1/2"

* includes 16 acrylic shelves

5 Column Unit

*With 25 openings
*Internal compartment width 11"

REF	Width	Depth	Height
A5CA18	60"	15 1/4"	19 1/2"
A5CA36	60"	15 1/4"	37 1/2"
A5CA42	60"	15 1/4"	43 1/2"

* includes 20 acrylic shelves



Single Column

*With 5 openings
*Internal compartment width 11"

REF	Width	Depth	Height
A1CA18	12"	15 1/4"	19 1/2"
A1CA36	12"	15 1/4"	37 1/2"
A1CA42	12"	15 1/4"	43 1/2"

* includes 4 acrylic shelves



Acrylic Shelves

*Pack of 5 acrylic shelves

REF	Width	Depth	Height
ASA	11"	15"	1/4"



Label and Rings

*5 per pack

REF	ALCR

MAILROOM FURNITURE - SILVERSTREAM LINE

The Silverstream line combines extra strong 1.25" x 1.25" steel frames, high impact laminate and impact resistant worktops to form an extremely hard wearing and versatile range of modular mailroom furniture.

Main shot shown in grey.



4142



Grey Glace

947



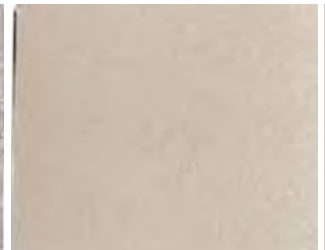
Optical Kiwi

961

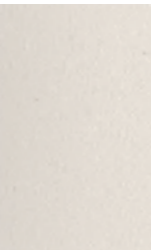


Stainless

807



Calamare



Willow Grey



802



Nova White

555



Chocolate Pear Tree

L444



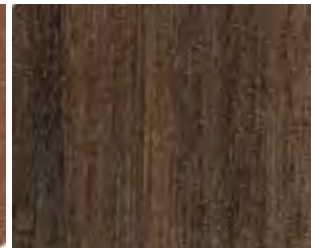
Summer Flame

L420



Bio Bamboo

512





Console With Locking Doors & Shelf

REF	Width	Depth	Height 1	Height 2
SCU1	36"	30"	30"	36"
SCU2	48"	30"	30"	36"
SCU3	60"	30"	30"	36"
SCU4	72"	30"	30"	36"



Open Console With Shelf

REF	Width	Depth	Height 1	Height 2
SOCU1	36"	30"	30"	36"
SOCU2	48"	30"	30"	36"
SOCU3	60"	30"	30"	36"
SOCU4	72"	30"	30"	36"



Desk With Lockable Pedestal

REF	Width	Depth	Height 1	Height 2
SPD1	36"	30"	30"	36"
SPD2	48"	30"	30"	36"
SPD3	60"	30"	30"	36"
SPD4	72"	30"	30"	36"



Open Bench With Shelf

REF	Width	Depth	Height 1	Height 2
SPTS1	36"	30"	30"	36"
SPTS2	48"	30"	30"	36"
SPTS3	60"	30"	30"	36"
SPTS4	72"	30"	30"	36"



Mail Drop Chute

Ref SMDC



Casters

*2 lockable / 2 standard

REF C2LS



Cable Tidy

*Gray cable tidy

REF SCT



Open Bench

REF	Width	Depth	Height 1	Height 2
SPT1	36"	30"	30"	36"
SPT2	48"	30"	30"	36"
SPT3	60"	30"	30"	36"
SPT4	72"	30"	30"	36"



Corner Unit

REF	W x D x H
SIU-30	30 x 30 x 30"
SIU-36"	30 x 30 x 36"



Dump Table

- * 3 sided splash 6"(H) for dumping mail
- * PVC edged worktop

REF	Width	Depth	Height 1	Height 2
SDT2	48"	30"	30"	36"
SDT3	60"	30"	30"	36"



Manifest Work Station

- *Dual shelf with modesty panel
- *Paper feed slots
- *2 file drawers + box drawer
- *CPU Holder

REF	Size	W x D x H
SMWS2		48 x 30 x 30"
SMWS3		60 x 30 x 30"



Packing Bench

- * With cutter bar, packing roll and 18" high shelf
- * PVC edged worktop
- * Manufactured steel construction
- * Fitted with fully adjustable feet
- * Shelving unit has 15 adjustable compartments
- * Each compartment 12 x 15 x 6"

REF	W x D	Height 1	Height 2
SPB3	62 x 30"	30"	36"



Sort Unit Base Stand

*Custom heights available

REF	Width	Depth	Height
SBS3	36"	15"	20"
SBS4	48"	15"	20"
SBS5	60"	15"	20"
SBS6	72"	15"	20"



Crank Adjustable Work Station

- * Easy to use adjusts in seconds
- * 28" - 36"

REF	Size W x D x H
SCAW2	48 x 30 x 28 - 36
SCAW3	60 x 30 x 28 - 36



These are our most popular mailsort frames, and are available in a variety of shapes and sizes. Made of strong wire mesh, they are robust and yet they let light through. All units can be made to your specific requirements - please call for details.

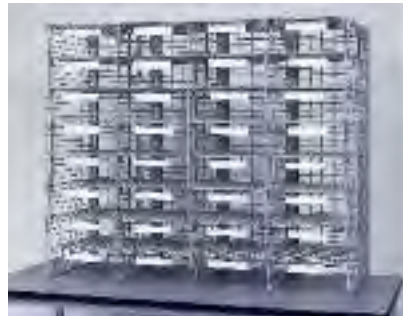
ALL UNITS COME COMPLETE WITH WHITE SNAP ON LABELS!

DON'T FORGET OUR MAILSORT ACCESSORIES



32 Compartment Sorter Unit 15" D

	REF	W x D x H
4 Col Unit 32 mail slots	SM41532	48 x 15 x 40"
Add on Column 8 mail slots	SMA158	12 x 15 x 40"
Extra shelf	SS15	12 x 15"



32 Compartment Sorter Unit 18" D

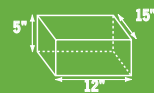
	REF	W x D x H
4 Col Unit 32 mail slots	SM41832	48 x 18 x 40"
Add on Column 8 mail slots	SMA188	12 x 18 x 40"
Extra shelf	SS18	12 x 18"



Desk Top Sort Unit

	REF	W x D x H
4 Col Unit 16 Mail Slots 12" (W) x 15" (D) x 4" (H)	SDT416	48 x 15 x 18"
Add on Column 12" (W) x 15" (D) x 4" (H)	SDA154	12 x 15 x 18"
Extra shelf	SS15	12 x 15"

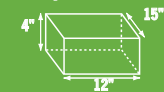
Internal compartment size



Internal compartment size



Internal compartment size

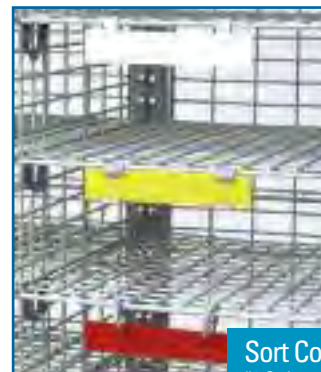


* Table sold separately, see page 13

Through-Sort Unit

* as shown 5 column unit with base and side upright supports.
* Complete with 40 adjustable mail slots accessible from front and back of the unit

	REF	W x D x H
5 Col Unit 25 mail slots	ST51825	60 x 18 x 40"
4 Col Unit 20 mail slots	ST41820	48 x 18 x 40"
3 Col Unit 15 mail slots	ST31815	36 x 18 x 40"
Extra shelf	SS18	12 x 18"



Sort Compartment Labels

*3 Styles to choose from
*Snap on label shown in white
*Quick change label shown in yellow
*Label with rings shown in red

REF	Colour	Size W x H
SLSO	white label	6 x 1"
SLQC	yellow label	6 x 1"
SLR	red label	6 x 1"

Colours



Direct Sorting Pouch

- * Heavy duty pouch for postal and courier use up to 25lbs
- * Fits neatly into unit for direct distribution
- * To fit 18" deep mailsort frame

REF	Width	Depth	Height
DSP5	11"	17"	5"
Colours			



One Trip Direct Mail Sorter

	REF	W x D x H
3 Col Unit 39 Mail Slots 12"(W) x 15"(D) x 3"(H)	SDS339	36 x 15 x 40"
4 Col Unit 52 Mail Slots 12"(W) x 15"(D) x 3"(H)	SDS452	48 x 15 x 40"
5 Col Unit 65 Mail Slots 12"(W) x 15"(D) x 3"(H)	SDS565	60 x 15 x 40"

Pouch Holder

- * For holding direct sorting pouch in open position

REF
SPH
Colours



Save Time with our new direct sort mail system.

Designed for one trip mail outs.
Simply insert the courier envelope into the sorting unit.
Fill the contents up to the last minute, pull out the envelope seal and send.



Column Lectern

- *For identifying mailsort column content

REF	Width	Depth	Height
OHS3	36"	11 1/2"	9"
OHS4	48"	11 1/2"	9"
OHS5	60"	11 1/2"	9"



Sort Unit Table Riser

- *Custom heights available

REF	Width	Depth	Height
STR3	36"	15"	10"
STR4	48"	15"	10"
STR5	60"	15"	10"





Aspect Console with Sort Station

	Ref	Size W x D x H
Console with 15 Mail Slots	ACSS1	36 x 30 x 66
Console with 20 Mail Slots	ACSS2	48 x 30 x 66
Console with 25 Mail Slots	ACSS3	60 x 30 x 66



Aspect Bottom Shelf Unit with Sort Station

	Ref	Size W x D x H
Bottom Shelf Unit with 15 Mail Slots	ABSS1	36 x 30 x 66
Bottom Shelf Unit with 20 Mail Slots	ABSS2	48 x 30 x 66
Bottom Shelf Unit with 25 Mail Slots	ABSS3	60 x 30 x 66



Silverstream Console with Sort Station

	Ref	Size W x D x H
Console with 24 Mail Slots	SCSS1	36 x 30 x 70
Console with 32 Mail Slots	SCSS2	48 x 30 x 70
Console with 40 Mail Slots	SCSS3	60 x 30 x 70



Silverstream Bottom Shelf Unit with Sort Station

	Ref	Size W x D x H
Bottom Shelf Unit with 24 Mail Slots	SBSS1	36 x 30 x 70
Bottom Shelf Unit with 32 Mail Slots	SBSS2	48 x 30 x 70
Bottom Shelf Unit with 40 Mail Slots	SBSS3	60 x 30 x 70



Aspect Open Bench Unit with Sort Station

	Ref	Size W x D x H
Open Bench Unit with 15 Mail Slots	APSS1	36 x 30 x 66
Open Bench Unit with 20 Mail Slots	APSS2	48 x 30 x 66
Open Bench Unit with 25 Mail Slots	APSS3	60 x 30 x 66



Aspect Console with Sort Station

	Ref	Size W x D x H
Console with 15 Mail Slots	ACSS1E	36 x 30 x 66
Console with 20 Mail Slots	ACSS2E	48 x 30 x 66
Console with 25 Mail Slots	ACSS3E	60 x 30 x 66



Silverstream Open Bench Unit with Sort Station

	Ref	Size W x D x H
Open Bench Unit with 24 Mail Slots	SPSS1	36 x 30 x 70
Open Bench Unit with 32 Mail Slots	SPSS2	48 x 30 x 70
Open Bench Unit with 40 Mail Slots	SPSS3	60 x 30 x 70



Aspect Console with Wire Sort Station

	Ref	Size W x D x H
Console with 24 Mail Slots	ACWS1E	36 x 30 x 70
Console with 32 Mail Slots	ACWS2E	48 x 30 x 70
Console with 40 Mail Slots	ACWS3E	60 x 30 x 70



Aspect Console with Sort Station on Riser

	Ref	Size W x D x H
Console with 15 Mail Slots	ACSS1R	36 x 30 x 77
Console with 20 Mail Slots	ACSS2R	48 x 30 x 77
Console with 25 Mail Slots	ACSS3R	60 x 30 x 77



Aspect Console with Wire Sort Station on Riser

	Ref	Size W x D x H
Console with 24 Mail Slots	ACWS1R	36x30x76
Console with 32 Mail Slots	ACWS2R	48x30x76
Console with 40 Mail Slots	ACWS3R	60x30x76



Silverstream Console Unit with Sort Station on Riser

	Ref	Size W x D x H
Console with 24 Mail Slots	SCSS1R	36x30x76
Console with 32 Mail Slots	SCSS2R	48x30x76
Console with 40 Mail Slots	SCSS3R	60x30x76



Metal Console with Sort Station on Riser

	Ref	Size W x D x H
Console with 15 Mail Slots	MCSS1R	36x30x70
Console with 20 Mail Slots	MCSS2R	48x30x70
Console with 25 Mail Slots	MCSS3R	60x30x70



Aspect Sort Station

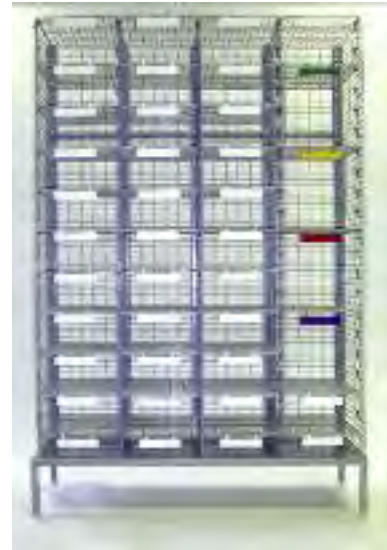
- * Free Standing Sort Station mounted on an all welded 8"(H) Riser
- * Easily adjustable shelves in 3/4" increments
- * Shelves available in wood Ref ASW or Acrylic ASA
- * Additional Shelves available

REF	W x D x H
ASSW3 includes 24 wooden shelves	36 x 15 x 71
ASSW4 includes 32 wooden shelves	48 x 15 x 71
ASSW5 includes 40 wooden shelves	60 x 15 x 71
ASSA3 includes 24 acrylic shelves	36 x 15 x 71
ASSA4 includes 32 acrylic shelves	48 x 15 x 71
ASSA5 includes 40 acrylic shelves	60 x 15 x 71

Silverstream Sort Station

- * Free Standing Sort Station mounted on an all welded 8"(H) Riser
- * Shelves adjustable in 1" increments
- * Additional Shelves available REF SS15

REF	W x D x H
SSS3 includes 36 shelves	36 x 15 x 72
SSS4 includes 48 shelves	48 x 15 x 72
SSS5 includes 60 shelves	60 x 15 x 72



Supply/Copy Room Station

- * Create your own style wallmount cabinets to store stationary supplies or add a Silverstream or Aspect Sorter insert for added flexibility
- * Custom Sizes available

Ref	Size W x D x H
Silverstream Colors SCRSS	30 x 12 x 36
Aspect Colors SCRSA	30 x 12 x 36



Supply Station

- * Lockable Free Standing Storage Cabinet to store stationary supplies or add a Silverstream or Aspect Sorter insert for added flexibility
- * Custom Sizes available

Ref	Size W x D x H
SSFS	36 x 24 x 72



Silverstream File & Store Station with Mail Sorter		
Ref	Size W x D x H	
Cabinet/ Lateral File + Sort Unit with 24 Mail Slots	FSSS1	36 x 30 x 70
Cabinet/ Lateral File + Sort Unit with 32 Mail Slots	FSSS2	48 x 30 x 70
Cabinet/ Lateral File + Sort Unit with 40 Mail Slots	FSSS3	60 x 30 x 70



Aspect File & Store Station with Mail Sorter		
Ref	Size W x D x H	
Cabinet/ Lateral File + Sort Unit with 15 Mail Slots	FSSA1	36 x 30 x 67
Cabinet/ Lateral File + Sort Unit with 20 Mail Slots	FSSA2	48 x 30 x 67
Cabinet/ Lateral File + Sort Unit with 25 Mail Slots	FSSA3	60 x 30 x 67



Silverstream File Station with Mail Sorter		
Ref	Size W x D x H	
Open File Station + Sort Unit with 24 Mail Slots	FSSPT1	36 x 30 x 70
Open File Station + Sort Unit with 32 Mail Slots	FSSPT2	48 x 30 x 70
Open File Station + Sort Unit with 40 Mail Slots	FSSPT3	60 x 30 x 70



Aspect File Station with Mail Sorter		
Ref	Size W x D x H	
Open File Station + Sort Unit with 15 Mail Slots	FSAPT1	36 x 30 x 67
Open File Station + Sort Unit with 20 Mail Slots	FSAPT2	48 x 30 x 67
Open File Station + Sort Unit with 25 Mail Slots	FSAPT3	60 x 30 x 67

NEW!



Design your own Base cabinets and pick your own work surface to suit your needs

Worksurfaces



Worksurfaces to cover up to 30" deep compartments



Worksurfaces to cover up to 24" deep compartments



Worksurfaces to cover up to 18" deep compartments

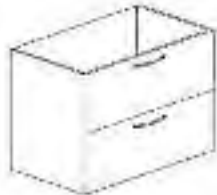
**Pedestals & Lats
Floor supported**



2 File

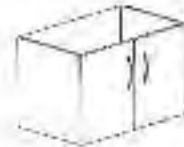


2 Box, 1 File

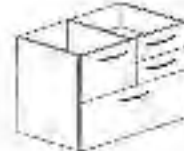


2 Drawer Lateral

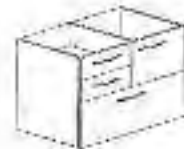
Storage Units



Closed Storage



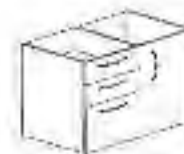
Personal Pedestal, 2 Box Right



Personal Pedestal, 2 Box Left



Personal Combo Storage Left



Personal Combo Storage Right

NEW!

Design your own Case Work Cabinets. Available in 10 colours, 32 Door styles and dozens of sizes to meet every room configuration.



CABINET COLOUR OPTIONS

- | | |
|-------------------|------------------|
| 1 Majestic Walnut | 6 Java Glow |
| 2 Swiss Pear | 7 Honey Apple |
| 3 Portland Cherry | 8 White |
| 4 Chocolate Maple | 9 Bleached Maple |
| 5 Red Apple | 10 Natural Maple |



- 1 2 3 4 5

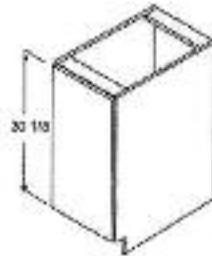
Cabinet Construction Specifications

- Gables:** 5/8" thickness melamine
- Backs:** 5/8" thickness melamine
- Drawer Bottoms:** 1/2" thickness melamine
- Shelves:** 5/8" thickness melamine
- Doors:** As per individual specification
- Hinges:** 6 way adjustable clip on hinge
- Drawer Slides:** Steel Sided, fully adjustable



WALL CABINETS

WIDTH	12" 15 1/4" 18 3/4" 21 1/4", 24" 26 3/8" 30 1/4"
DEPTH	12", 15", 24"
HEIGHT	24" 27" 30" 33" 36" 39" 42"

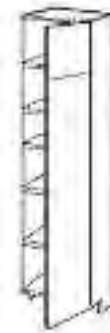


BASE CABINETS

WIDTH	12" 15" 18" 21" 24" 27" 30" 33" 36" 39" 42"
DEPTH	23 1/2"
HEIGHT	34 3/4"

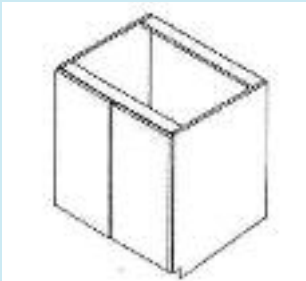
TALL CABINETS

WIDTH	12" 15 1/4" 18 3/4" 21 1/4" 24" 26 3/8" 30 1/4"
DEPTH	12" .. 24"
HEIGHT	84" 87" 90" 93" 96"

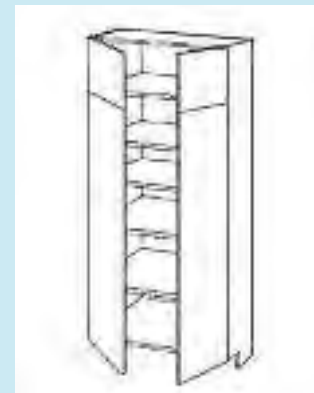


BASE CABINETS

Full height door



TALL CABINETS

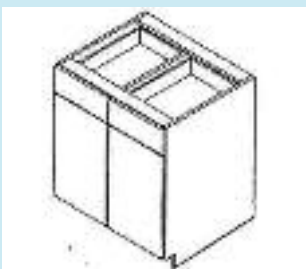


WALL CABINETS



BASE CABINETS

Door + Drawer

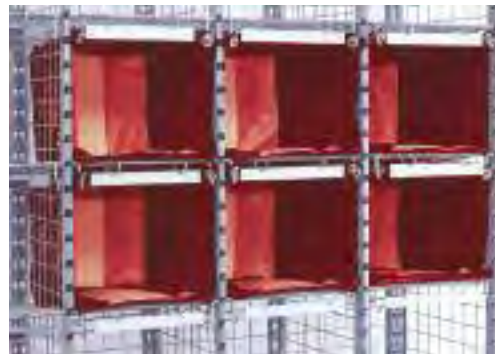




Large Volume Sorter			
	Ref	Size W x D x H	
3 Column Unit 15 Mail Slots 14"(W) x 18"(D) x 12"(H)	BMS315	43 1/2 x 18 x 72	
4 Column Unit 20 Mail Slots 14"(W) x 18"(D) x 12"(H)	BMS420	57 1/2 x 18 x 72	
5 Column Unit 25 Mail Slots 14"(W) x 18"(D) x 12"(H)	BMS525	71 1/2 x 18 x 72	

BRANCH MAIL SORTER

Designed specifically for large mail users Our new self-locking independent shelf system provides users with the flexibility of direct to sort bags in a variety of sizes or using the system as an internal large sort operation



BRANCH BAGS COMPLETE WITH TAMPER EVIDENT SEALING SYSTEM - SEE PAGE 36 FOR DETAILS



Mobile Bulk Sort Unit		
* Heavy-duty tubular posts		
* 4 Easy adjustable Slanted Shelves		
* 5" swivel casters 2 directional, 2 with brakes		
Ref	Size W x D x H	
MBSU3	36 x 18 x 63	
MBSU4	48 x 18 x 63	
MBSU5	60 x 18 x 63	



Bulk Sort Unit		
* Heavy-duty tubular posts.		
* 4 Easy adjustable Slanted Shelves		
Ref	Size W x D x H	
BSU3	36 x 18 x 63	
BSU4	48 x 18 x 63	
BSU5	60 x 18 x 63	



Bulk Tub Cart		
	Ref	Size W x D x H
Two Slant Shelves, Heavy Duty	BTC4	48 x 18 x 37
Tubular posts, 5" swivel casters 2 directional, 2 with breaks	BTC5	60 x 18 x 37

Mobile Sorter 30" H
 * Ideal for one step sorting
 * Bottom shelf area 37 x 18 x 16 H
 * 18 adjustable shelf compartments
 * Additional shelves available

	Size W x D x H
Cart	42 x 18 x 50
Sort Compartment	12 x 18 x 5
REF MSU18	Stock Colour



Mobile Bulk Tub Unit
 * Heavy-duty all welded tubular steel unit with 5" swivel casters 2 directional, 2 with brakes

Ref	Size W x D x H
MBT3	36 x 18 x 37
MBT4	48 x 18 x 37
MBT5	60 x 18 x 37



Modular Shelving Starter Unit

Develop your storage system with a SMS Starter Unit.

Each Starter unit consists of four posts, four shelves and plastic clips. Choose the shelf size that fits your requirements from the chart below



Starter Unit 74" (H)

Size	Model	Size	Model	Size	Model
18 x 42	1842C	21 x 42	2142C	24 x 42	2442C
18 x 48	1848C	21 x 48	2148C	24 x 48	2448C
18 x 54	1854C	21 x 54	2154C	24 x 54	2454C
18 x 60	1860C	21 x 60	2160C	24 x 60	2460C
18 x 66	1866C	21 x 66	2166C	24 x 66	2466C
18 x 72	1872C	21 x 72	2172C	24 x 72	2472C

Add-on Unit

Increase your storage space by purchasing an Add-on unit.

Each Add-on unit consists of two posts, four shelves, plastic clips and eight S-hooks, which saves the cost of purchasing two additional posts.



Add-on Unit 74" (H)

Size	Model	Size	Model	Size	Model
18 x 42	A1842C	21 x 42	A2142C	24 x 42	A2442C
18 x 48	A1848C	21 x 48	A2148C	24 x 48	A2448C
18 x 54	A1854C	21 x 54	A2154C	24 x 54	A2454C
18 x 60	A1860C	21 x 60	A2160C	24 x 60	A2460C
18 x 66	A1866C	21 x 66	A2166C	24 x 66	A2466C
18 x 72	A1872C	21 x 72	A2172C	24 x 72	A2472C



Additional Wire Shelf

Size	Model	Size	Model	Size	Model
18 x 42	S1842C	21 x 42	S2142C	24 x 42	S2442C
18 x 48	S1848C	21 x 48	S2148C	24 x 48	S2448C
18 x 54	S1854C	21 x 54	S2154C	24 x 54	S2454C
18 x 60	S1860C	21 x 60	S2160C	24 x 60	S2460C
18 x 66	S1866C	21 x 66	S2166C	24 x 66	S2466C
18 x 72	S1872C	21 x 72	S2172C	24 x 72	S2472C



SMS1 Mail Cart

- * All welded tubular frame
- * Rotating front disc bumpers
- * Two fully removable baskets

Ref SMS1	Size W x D x H
Cart	23 x 29 x 39 1/2
Top Basket	18 x 14 x 11
Bottom Basket	18 x 14 x 11
Wheel Diameter	front 5" back 8"
Stock Colour	



SMS2 Mail Cart

- * All welded tubular frame
- * Rotating front disc bumpers
- * Two fully removable baskets
- * NEW ergonomic handle

Ref SMS2	Size W x D x H
Cart	23 x 29 x 37
Top Basket	18 x 24 x 11
Bottom Basket	18 x 20 x 6
Wheel Diameter	front 5" back 8"
Stock Colours	



SMS4 Mail Cart

- * All welded tubular frame
- * Rotating front disc bumpers
- * Two fully removable baskets
- * NEW ergonomic handle

Ref SMS4	Size W x D x H
Cart	23 x 44 x 37
Top Basket	18 x 36 x 11
Bottom Basket	18 x 30 x 6
Wheel Diameter	front 5" back 8"
Stock Colours	



Rear Basket

- * For use with all SMS series carts

Ref RBSK	Size W x D x H
Basket	13 x 7 x 16
Stock Colour	



Lockable File Box

Ref	FITS
SMS2LB	SMS2 cart
SMS4LB	SMS4 cart
SMS5LB	SMS5 cart



Basket Covers

- * 18oz Durable PVC Nylon Covers keep your files dry and secure when locked using our dual zip system
- * Flap design allows easy access to files
- * Available in see through or opaque material

Ref	Size W x D x H
BC1T	18 x 14 x 11
BC2T	18 x 24 x 11
BC4T	18 x 36 x 11
BC5T	18 x 36 x 11
Stock Colours	

Hanging File Folders

- * Segregates cart contents
- * PVC coated nylon material
- * For use with all carts
- * Five pockets per set

Ref	HFF
Stock Colour	

Hanging File Tags

- * Labels file compartment
- * 25 labels per package

Ref	HFT
Stock Colour	transparent



Side Impact Bumper

- * Optional side and front bumper strip for use with all SMS carts.
- * Heavy duty impact protector

Ref	SIB
Stock Colour	





Assembly required

SMS5 Mail Cart

- * All welded tubular frame
- * Independent rotating front disc bumpers
- * Heavy duty 8" front 4 bolt casters
- * 16" rear wheels
- * New ergonomic handle

Ref	Size W x D x H
SMS5	27 x 43 x 37
Top Basket	18 x 36 x 11
Bottom Basket	18 x 30 x 6
Stock Colour	

SMS6 Mail Cart

- * All welded tubular frame
- * Independent rotating front disc bumpers
- * Heavy duty 8" front 4 bolt casters
- * 16" Rear wheels
- * New ergonomic handle
- * 48" Capacity

Ref SMS6	Size W x D x H
Cart	27 x 54 x 37
2 Top Baskets	18 x 24 x 11
Bottom Basket	18 x 45 x 6
Stock Colour	

EMC Cart

- * Chrome wire cart with donut bumpers
- * Tubular frame with baskets

Ref EMC	Size W x D x H
Cart	18 x 36 x 38
Top Basket	18 x 36 x 11
Bottom Basket	18 x 36 x 6
Wheel Diameter	front 5" back 5"



Assembly required



Assembly required



Assembly required

Flat Shelf Cart

- * Versatile flat shelf designed for transport of oversized bulky items
- * All plastic design. Sturdy construction
- * Capacity 400 lbs

Ref	Size W x D x H
FSCR1	38 x 19.25 x 33.25
FSCR2	44 x 25.50 x 33.25

Utility Cart

- * 4 sided edging keeps items secure.
- * All plastic design. Sturdy construction
- * Capacity 400 lbs

Ref	Size W x D x H
UCR1	30 x 16 x 32
UCR2	36 x 24 x 32

Wire Utility Cart

- * Available with 2 or 3 shelves
- * Capacity 400 lbs

Ref	Size W x D x H
CUC2 (2 shelves)	36 x 24 x 38
CUC3 (3 shelves)	36 x 24 x 38



Mobile Mail Sack Holder

- * Contour design, rounded corners
- * Holds mail sacks in open position

REF	Size W x D x H
SH1 (single)	17 x 16 x 44
SH2 (double)	31 x 16 x 44
Stock Colour	



Mail Sacks

- * Manufactured from your choice of fabrene or 18oz PVC material
- * Grommet draw string closure

REF	Size W x D x H
MSF (fabrene)	19 x 16 x 38
MSN (18oz PVC)	19 x 16 x 38
Fabrene Colours	
18oz PVC Colours	



Easy Access StarCart

- * 5" threadguard casters in diamond or corner pattern
- * Easy access sidewall

Stock Colour						
Model No.	BU.	Cubic Feet	Inside LxWxH	Outside LxWxH	Max. Load	Shipping Weight
165 B	18	21	41x27x32"	46x31x39"	900	75
185 B	21	24	58x27x32"	63x31x39"	900	100



H.D. Elevated StarCart

- * 4" swivel threadguard casters
- * Powder coated steel frame
- * Removable plastic body

Stock Colour						
Model No.	BU.	Cubic Feet	Inside LxWxH	Outside LxWxH	Max. Load	Shipping Weight
310 E	4	5	35x23x10"	39x27x29"	800	55
320 E	2	3	45x22x5"	48x24x34"	800	60
330 E	7	9	45x22x15"	48x24x34"	1000	70



Regular StarCart

- * 4" threadguard casters in diamond pattern
- * Treated plywood undercarriage

Stock Colour						
Model No.	BU.	Cubic Feet	Inside LxWxH	Outside LxWxH	Max. Load	Shipping Weight
125 B	10	12	35x23x25"	39x27x29"	800	50
135 B	12	15	37x25x26"	41x29x31"	800	55
145 B	16	16	38x26x28"	43x31x33"	800	60



Star Cart with Spring Platform

- * 4" threadguard casters
- * Treated plywood undercarriage
- * Spring Loaded insert lowers and raises contents

Ref	Size W x D x H
SP125B	39 x 27 x 29
SP135B	41 x 29 x 31
SP145B	43 x 31 x 33t



Star Cart with lockable Hinged Lid

- * 4" threadguard casters
- * Treated plywood undercarriage
- * Lockable Hinged lid

Ref	Size W x D x H
HL125B	39 x 27 x 29
HL135B	41 x 29 x 31
HL145B	43 x 31 x 33



Jumbo StarCart

- * 6" threadguard casters in diamond or corner pattern
- * Easy access sidewall
- * Treated plywood undercarriage

Stock Colour						
Model No.	BU.	Cubic Feet	Inside LxWxH	Outside LxWxH	Max. Load	Shipping Weight
840B	30	38	60" x 40" x 28"	62" x 44" x 38"	1200	180
850B	48	60	62" x 42" x 42"	65" x 45" x 54"	1500	200



Auto Level Cart

- * Ergonomically designed
- * Calibrated springs raise the base
- * Mail is presented at constant height
- * Capacity 165 lbs

Ref	Size W x D x H
MALT1	36 x 29 x 36



Dual Purpose Hand Truck

REF	Wheel	Caster
DPH1 Semi-Pneumatic	8"	3"
DPH2 Full Pneumatic	10"	5"
DPH3 Semi-Pneumatic	10"	5"



Steel Deck Platform Truck

- * Steel deck reinforced with 2 x 1 rectangular channels for extra strength
- * 5" Rubber casters, crossbar handle
- * Capacity 1200 lbs

Ref	Size W x D
SDPT1	24 x 36
SDPT2	24 x 48



Aluminum Platform Truck

- * Lightweight aluminum platform truck weighs 40% less than steel
- * 8" x 2" Rubber casters, crossbar handle
- * Capacity 2000 lbs

Ref	Size W x D
ADPT1	24 x 36
ADPT2	24 x 48



Platform Truck

- * Heavy duty plastic platform truck
- * 6" x 2" Rubber casters, crossbar handle
- * Capacity 1000 lbs

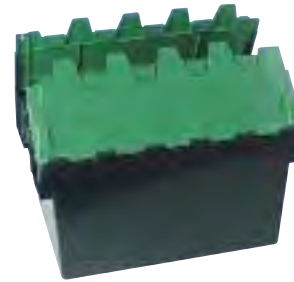
REF	Size W x D
PT1	24 x 36
PT2	24 x 48



Corrugated Plastic Material Handling Totes (Nesting)

We stock the three most common sizes of nesting utility totes. Made of corrugated plastic with wire reinforcement.

Stock No.	Inside Dim. (Top)	Inside Dim. (Bottom)	Depth	Stack of 10 Stands
3100	14.25 x 10.25"	12 x 9"	8"	26"
General Use: Perfect for standard paper storage				
3200	17.5 x 12.5"	15 x 10.5"	11"	30"
General Use: Nests with existing Postal Tote				
3300	23.5 x 20.5"	21.25 x 18.25"	11"	40"
General Use: Nests with existing UPS Bulk Tote				



Courier Box with Attached Lid

- * Lockable box for courier use
- * Sturdy plastic construction
- * Folding lid

Model Number	Dimensions (inches)	Cubic Feet	Nesting Ratio	Shipping Weight	Standard Colour
09-417	20 x 12 x 7	0.6	3:1	3.8	Grey
09-443	21 x 15 x 9	1.4	4:1	5.0	Grey
09-453	21 x 15 x 12	1.7	4.3:1	5.9	Grey
09-593	24 x 20 x 12	2.5	5.6:1	7.4	Grey
Stock Colour 					

Anti-Fatigue Matting

- * Overall thickness 3/8"
- * Slip resistant pebble surface

Ref	Size W x L
AFM1	2' x 3'
AFM2	3' x 5'
AFM3	3' x 10'
Colours 	





SMS pouches and bags are used around the world by individuals, private companies and the public sector for reasons as diverse as protecting blood samples, securing important documents, transporting machine parts and handling cash

SMS POUCHES AND BAGS

Our locking system is a simple and user-friendly tamper evident sealing system - see opposite page for details.



With our sealing system, the broken part of the seal falls free from the locking device- this prevents jamming which in turn prolongs the life of the bag.



We use high quality PVC coated nylon, 1000 D cordura and 420 nylon material for our bags, which adds to their long life while protecting the contents



The reusability, long life and user-friendliness of our bags makes them more cost effective than the cheapest of alternatives.



Our bags will protect your contents against rain, snow... or even spilt coffee!



For extra protection, we can make bags with padded lining, impact protectors, foam inserts – anything you need to protect your contents.



Unlike paper envelopes, our pouches and bags won't tear or burst, giving you peace of mind that your contents will arrive in pristine condition.



COLOURS

Our standard bags are available in a variety of colours. Not all of these colours are held in stock – you'll see the stock colours next to each bag in this catalogue.

And don't forget, if you want a bag that isn't one of our standard colours, we can custom make one for you.

PRINT

All of our bags can be printed with your logo or other information. A one time silk screen set-up charge would apply + the cost of print per bag.



Whether you're sending documents in the mail, courier, storing or transporting sensitive items, handling cash-or need to secure any type of item- then by using our tamper evident bag and security seal you can be sure the item is safe.



HOW DOES IT WORK?

Step 1: Insert contents and zip bag closed.



Step 2: Place zip puller into position.



Step 3: Insert button seal into locking house.



To open: Lift zip puller until seal breaks



Guaranteed against debris build-up. The broken part of the seal falls free from the locking house-which prevents jamming, prolongs the life of the bag and greatly simplifies handling time.

PRODUCT CODE

VSP
PLAIN BUTTON SEALS
 Plain seals come in boxes of 500 seals.
 Minimum order 1,000 seals (2 boxes)
 Blue, Red, Black

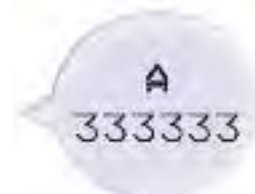
COLOURS



PRODUCT CODE

VSN
NUMBERED BUTTON SEALS
 each seal is printed with a unique 6 digit number for added security. Numbered seals come in boxes of 500 seals. Minimum order 1,000 seals (2 boxes)
 Blue, Red, White

COLOURS



PRODUCT CODE

VSNL
PERSONALIZED BUTTON SEALS
 Each seal is printed with up to 6 letters from your Company name Personalized seals come in boxes of 500 seals. Minimum order 50,000 seals (100 boxes)
 Blue, Red, White, Green, Orange, Yellow

COLOURS



Padlock seals

* Easy to insert and remove seal
 Material: Delrin
 1000 per box

REF SMPS

Stock colours



Multiuse seals

* Easy to insert, cut remove seal
 Size 3/16" x 7" Long
 1000 per box

REF SMUS

Stock colours



Mail Sack seals

* Easy to insert, cut remove seal
 Size 3/16" x 9" Long
 1000 per box

REF SMSS

Stock colours



Short Edge Zip Mailing Pouch

- * Lightweight 10oz PVC Nylon
- * Inside access address window & waybill pocket

Ref	Size	W x H
CVF1	Small	10 x 14
CVF2	Medium	14 x 16
CVF3	Large	14 x 20

Stock Colours ■ ■ ■



Long Edge Zip Mailing Pouch

- * Lightweight 10oz PVC Nylon
- * Address window and waybill pocket

REF	Size	W x H
VCF2	Small	16 x 14
VCF3	Medium	18 x 14
VCF4	Large	20 x 16

Stock Colours ■ ■ ■



Top Edge Zip Pouch

- * 18oz Heavyweight PVC Nylon material
- * Inside access address window & waybill pocket

REF	Size	W x D x H
CG2	Small	16 x 12 x 3"
CG3	Medium	18 x 14 x 3"

Stock Colours ■ ■ ■



Extended Zip Premium Pouch

- * 18 oz Heavyweight PVC Nylon material
- * Inside access address window & waybill pocket

REF	Size	W x D x H
ZG2	Small	16 x 12 x 3"
ZG3	Medium	18 x 14 x 3"
ZG4	Large	20 x 16 x 3"

Stock Colours ■ ■ ■



Extended Zip Pouch

- * Durable 18oz PVC Nylon
- * Inside access address window & waybill pocket

REF	Size	W x D x H
BV1	Small	14 x 10 x 4"
BV2	Medium	16 x 12 x 4"
BV3	Large	18 x 14 x 4"

Stock Colours ■ ■ ■



Media Mailer

- * Lightweight 10oz PVC Nylon
- * Address window & waybill pocket

REF	W x D x H
MCM2	13 x 13 x 3

Stock Colours ■ ■ ■



Security Bulk Mail Bag

- * Heavy duty 18oz PVC coated nylon
- * Inside access address window
- * Tamper evident zip closure

REF	Size	W x H x D
SBMB1	Small	14 1/2 x 16 x 8"
SBMB2	Medium	14 1/2 x 22 x 8"
SBMB3	Large	14 1/2 x 27 x 8"

Stock Colours ■ ■



Large Reinforced Transport Bag

- * Rugged 18oz PVC coated nylon with reinforced double bottom
- * Inside access address window
- * Comfort carrying handles

REF	Size	W x H x D
RTB2	Medium	20 x 24 x 5"

Stock Colours ■ ■



Large Volume Mailing Pouch

- * 18oz Heavyweight PVC Nylon material
- * Inside access address window & waybill pocket
- * With reinforced handles

REF	Size	W x D x H
VCS2	Small	20 x 14 x 8"
VCS3	Medium	22 x 12 x 10"
VCS4	Large	23 x 16 x 12"

Stock Colours ■ ■ ■



Clear Mail Wallet

- * 12ga Clear Vinyl Material
- * Inside access address window
- * Top edge zip

REF	Size W x H
CMW1	12 x 9
CMW2	14 x 11
Stock Colour Clear	



Internal Zip Mailing Pouch

- * Inside access address window
- * Colour coded ID strip

REF	Size W x H
IZM1	14x10
IZM2	16x12
Stock Colours	



Ultra Light Internal Wallet

- * 3.5 oz Clear Fabrene Material
- * Inside access address window
- * Colour coded ID flap

REF	Size W x H
UL1	15 x 12
UL2	16 x 14
Stock Colours	



Internal Mailing Pouch

- * 14 oz polynolic clear front with solid colour back and flap
- * Inside access address window
- * Velcro closure
- * Available with or without gusset

REF	Size	W x H x D	REF	Size	W x H x D
IVW1	Small	10 x 14"	IVW1G	Small	10 x 14 x 2"
IVW2	Medium	12 x 16"	IVW2G	Medium	12 x 16 x 2"
IVW3	Large	18 x 14"	IVW3G	Large	18 x 14 x 2"
Stock Colours other colours available					

Internal Mailing Pouch

- * 10 oz solid front, back and flap
- * Inside access address window
- * Velcro closure
- * Available with or without gusset

REF	Size	W x H x D	REF	Size	WxHxD
IV1	Small	10 x14"	IV1G	Small	10 x 14 x 2"
IV2	Medium	12 x16"	IV2G	Medium	12 x 16 x 2"
IV3	Large	18 x14"	IV3G	Large	18 x 14 x 2"
Stock Colours other colours available					



Secure Internal Mail Pouch

- * Transport confidential internal mail with peace of mind using our security seal
- * Window on front allows users to write addressee details, and viewing window on back shows whether the pouch is empty or in use

REF	Size W x H
SIMP1	10x14
Stock Colours	



Courier / Delivery Bag
 * Durable 1000D cordura material
 * Inside pocket
 * Zipper closure + velcro flap
 * Adjustable padded shoulder strap

REF	W x H x D
CDB1	20 x 15 x 8"

Stock Colours ■ ■ ■



Easy Load Bulk Bag
 * 18oz PVC nylon material
 * 3 sided zip opening top
 * Handles with easy grip
 * Window and pocket

REF	W x H x D
ELB1	18 x 12 x 10"

Stock Colours ■ ■ ■



Reinforced Transport Bag
 * #10 heavy duty canvas material
 * With reinforced double bottom
 * Wide comfort carrying handles

REF	Size W x H x D
RTB3	21 x 17 x 4"

Stock Colours ■ ■



Collapsible Mail Bag
 * Sides collapse for easy storage
 * wide mouth opening
 * Seal for tamper evidence protection
 * Durable 18oz PVC Material
 * Internal ID window and courier pocket

REF	Size W x H x D
CMB1	22 x 12 x 10

Stock Colours ■ ■ ■

Heavy Duty Security Bag
 * 18oz heavy weight PVC Nylon Material
 * Tamper evident zip closure
 * Address window & waybill pocket
 * Reinforced bottom

REF	Size	W x H x D
HSB1	Small	18 x 17 x 2"
HSB2	Large	19 x 28 x 3"

Stock Colours ■



Secure File Storage Bag - Opaque
 * This tamper evident pouch is designed to hold confidential office documents
 * Durable 18oz PVC Material
 * Internal ID window

REF	Size	W x H x D
SFSO1	Small	14 x 10 x 3
SFSO2	Medium	16 x 12 x 4
SFSO3	Large	18x14 x 5

Stock Colours ■ ■ ■



Secure File Storage Bag - Clear
 * This tamper evident pouch is designed to hold confidential office documents
 * Durable 18oz PVC Material
 * Internal ID window

REF	Size	W x H x D
SFSC1	Small	14 x 10 x 3
SFSC2	Medium	16x12 x 4
SFSC3	Large	18x14 x 5

Stock Colour Clear



Secure Cash in Transit Smoke Bag

- * This tamper evident pouch comes with anti-theft smoke holes
- * Durable 18oz PVC Material
- * Internal ID window

REF	Size	W x H x D
SCTSB1	Small	14 x 10 x 8
SCTSB2	Medium	16 x 12 x 8
SCTSB3	Large	18 x 14 x 8

Stock Colours ■ ■ ■



ATM Bag

- * Durable 18oz PVC Nylon Material
- * Inside access address window
- * Double stitched with inside binding
- * Tamper evident locking system

REF	Size W x H x D
ATM1	16 x 12 x 4"
ATM2	16 x 12 x 10"

Stock Colours ■ ■ ■



Armored Car Bag

- * 18oz heavy weight PVC Nylon Material
- * Tamper evident zip closure
- * Address window & waybill pocket
- * Reinforced bottom

REF	W x H x D
ACB1	16 x 16 x 4"
ACB2	16 x 12 x 12"

Stock Colours ■ ■ ■



Armored Car Carry Tote

- * Durable 1000 D Cordura Nylon Material
- * 18oz Double bottom for added ware
- * Comfort carrying handles

REF	Size W x H x D
ACCT1	15 x 16 x 12
ACCT2	18 x 16 x 12

Stock Colour Navy



Reinforced Transport Bag

- * Durable 1000D cordura mat'l
- * With reinforced base
- * Inside access address window
- * Comfort carrying handles

REF	Size W x H x D
RTB1	18 x 17 x 5"

Stock Colours ■ ■



Secure Cash Bag

- * 18oz heavy weight PVC Nylon Material
- * Tamper evident zip closure
- * Inside access address window

REF	Size	W x H x D
CCB1	Small	10 x 10 x 2"
CCB2	Medium	12 x 12 x 2"
CCB3	Large	14 x 14 x 2"

Stock Colours ■ ■



Merchandise Control Bag

- * 10 oz PVC Nylon material
- * Available in three closure systems
- * Tamper evident seal, Grommet or Key zip system

REF	Closure	W x H
MCB1-S	seal	14 x 20"
MCB1-G	grommet	14 x 20"
MCB1-K	key	14 x 20"
MCB2-S	seal	20 x 14"
MCB2-G	grommet	20 x 14"
MCB2-K	key	20 x 14"

Stock Colours ■ ■ ■



Float Bag

- * Cashiers float bag with Velcro closure
- * 7 fold over pockets for easy coin separation
- * canvas material

REF	Size W x H x D
CFB1	7 x 8"

Stock Colours ■





Branch Mailing Bag

- * Durable Cordura Nylon Material
- * Inside access address window
- * Reinforced handles
- * Double stitched with inside binding
- * Tamper evident locking system

REF	Size	W x H x D
BMB	12 x 11 x 17"	

Stock Colours ■ ■ ■ ■



Proof Bag

- * Durable Cordura Nylon Material
- * Inside access address window
- * Reinforced handles
- * Double stitched with inside binding
- * Tamper evident locking system

REF	Size	W x H x D
BPB1	16 x 11 1/2 x 3"	
BPB2	16 x 12 x 10"	

Stock Colours ■ ■ ■ ■



Collapsible Carrier Bag

- * Collapsible sides for easy storage
- * Wide mouth opening
- * Seal for tamper evident protection
- * Internal ID window
- * Cordure nylon with 18oz PVC double bottom

REF	Size	W x H x D
CACB1	17.5 x 10 x 10.5	

Stock Colours ■ ■ ■



Top Short Edge Zip Mailing Pouch

- * Durable 420 Nylon Material
- * Inside access address window

REF	Size	W x H x D
TES1	Small	10 x 14
TES2	Medium	12 x 16

Stock Colours ■ ■ ■



Top Long Edge Zip Mailing Pouch

- * Durable 420 Nylon Material
- * Inside access address window

REF	Size	W x H x D
TEL1	Small	14 x 10
TEL2	Medium	16 x 12

Stock Colours ■ ■ ■



Internal Zip Mailing Pouch

- * Durable 10oz Polynolic Material
- * Inside access address window
- * Colour coded ID flap

REF	Size	W x H x D
IZM1	14 x 10"	
IZM2	16 x 12"	

Stock Colours ■ ■ ■



Ultra Light Internal Wallet

- * 3.5 oz Clear Fabrene Material
- * Inside access address window
- * Colour coded ID flap

REF	Size	W x H x D
UL1	15 x 12"	
UL2	16 x 14"	

Stock Colours ■ ■ ■



Metered Mail Bag

- * 3.5 oz Clear Fabrene Material
- * Top edge zip closure
- * Inside access address window

REF	Size	W x H
MMB1	16 x 10"	

Stock Colour Clear



Payroll Bag

- * Durable PVC Nylon Material
- * Inside access address window
- * Zip closure with grommet

REF	Size	W x H x D
PB1	15 x 11"	

Stock Colours ■ ■ ■





Transit Bag

- * Durable PVC Nylon Material
- * Inside access address window
- * Reinforced handles
- * Tamper evident locking system

REF	Size W x H x D
BTB	16 x 12 x 3"

Stock Colours



Soft Cheque Bag - Small

- * Manufactured from 420 nylon with solid or clear front and address window 3 x 5"

	REF	W x H x D
Clear Top	SCSC	8 x 8 x 4 1/2"
Solid Top	SCSS	8 x 8 x 4 1/2"
Clear Reinforced Top	SCSR	8 x 8 x 4 1/2"

Stock Colours



Soft Cheque Bag - Large

- * Manufactured from 420 nylon with solid or clear front and address window

	REF	W x H x D
Clear Top	SCLC	8 x 16 x 4 1/2"
Solid Top	SCLS	8 x 16 x 4 1/2"
Clear Reinforced Top	SCLR	8 x 16 x 4 1/2"

Stock Colours



Personal Property Bag

- * This tamper evident pouch is designed to hold personal property
- * Durable Clear 14oz PVC Material
- * Large ID window

REF	Size W x H x D
PPB1	14 x 10
PPB2	16 x 12

Stock Colour Clear



Personal Property Bag with Gusset

- * This tamper evident pouch is designed to hold personal property
- * Durable 18oz PVC Material
- * Large ID window for listing contents of bag

REF	W x H x D
PPB1G	14 x 10 x 3
PPB2G	16 x 12 x 3

Stock Colours



Personal Property Bag with Drug Pouch

- * This tamper evident pouch is designed to hold personal property
- * Durable Clear 14oz PVC Material
- * Large ID window for listing contents of bag
- * Zippered pouch for dispensing medication

REF	W x H x D
PPBD1	15 x 19

Stock Colour Clear

ALL BAGS HIPAA COMPLIANT



Hospital Medical Records Bag

- * Seal for tamper evident protection
- * External pocket + internal ID window
- * 18 oz PVC nylon

REF	Size W x H x D
HMR2	16 x 12 x 3"
HMR3	18 x 14 x 3"

Stock Colours ■ ■ ■



X-Ray Bag

- * Seal for tamper evident protection
- * Internal ID window
- * 18oz PVC Nylon

REF	Size W x H x D
XRB1	20 x 18 x 3"

Stock Colour ■ ■ ■



Hospital Messenger Pouch

- * Communicate from ward to ward, or doctor to doctor with peace of mind using our tamper evident seal system.
- * Two Internal ID windows
- * 10oz PVC Nylon

REF	Size W x H
HMP2	16 x 12

Stock Colours ■ ■ ■



Transparent Letter Carrier

- * Seal for tamper evident protection
- * 18oz Transparent PVC Nylon insures documents don't get left behind.
- * Extra strong Handles

REF	Size W x H x D
TLC1	19 1/2 x 12 1/2 x 14



Medical Records Holdall

- * Patient records remain confidential and easily transported
- * Medical records stack for easy filing
- * Easy storage when empty
- * Two Internal ID windows
- * 18oz PVC Nylon
- * Extra strong Handles

REF	Size W x H x D
MRH1	14 x 12 x 12"

Stock Colour ■ ■ ■



Hospital Inpatient Bag

- * Seal for tamper evident protection
- * External pocket + internal ID window
- * 18oz PVC Nylon

REF	Size W x H x D
HIB2	16 x 12 x 3"
HIB3	18 x 14 x 3"

Stock Colours ■ ■ ■



IF YOU HAVEN'T FOUND THE BAG YOU'RE LOOKING FOR, DON'T WORRY ~ WE'LL TAILOR MAKE ANY BAG TO SUIT YOUR REQUIREMENTS. ANY SIZE, ANY SHAPE, ANY COLOUR, AND MANY DIFFERENT MATERIALS! JUST LET US KNOW YOUR REQUIREMENTS, AND WE'LL PROVIDE YOU WITH A QUOTATION.

Materials

We have a range of materials that we normally use, such as 18oz heavy quality and 10oz light quality PVC coated nylon, PU coated nylon, canvas, cordura, and fire-resistant fabrics. However if you have another material in mind let us know and we'll source it for you. If you are not sure, our sales team will be happy to advise you on the best material for your needs.

Handles

We can make bags with any type of handle, such as adjustable shoulder straps or comfort-grip handles.

Colours

We have a large range of colours available, depending on the type of material you choose.

Security

We manufacture a large variety of security seals, which can be added to your bags. Seals can be plain or numbered, printed with your company logo, or bar-coded to suit your requirements. See page 23 for more details.

Printing

We can print your company logo, or name and address, or anything you like.

Size

Bags can be manufactured flat, or with a gusset. Flat bags normally have a 15lb capacity, and gusset bags have a 40lb capacity. We can manufacture any size or shape you require.

Closing

We can manufacture bags with lots of different closing mechanisms, such as zip, drawstring, clasps, velcro, and slide bars. And don't forget our security seals for added security.



