

*Space*  
**PRO**®

*High Density Mobile  
Systems by*



**WWW.FILING  
TODAY.COM**

# SPACE SAVINGS are Only the *Beginning!*

Double your filing capacity.  
Or, free up to 50% of your existing  
floor space for other uses... work  
stations... a conference center...  
mail room, etc.

By mounting shelving units on  
movable carriages that roll on  
tracks, SpacePro eliminates the  
need for aisles. You can utilize  
your existing shelving or filing  
cabinets with the SpacePro system  
or select from a wide range of  
storage options.



## High Density, Very High *Style*

From high end legal offices, medical facilities and financial institutions to warehouse operations, SpacePro complements the style of your workplace with a virtually endless selection of end panels in solid colors, woodgrains and beautiful designer patterns.

An electronic touchpad or ergonomic handle allows effortless movement of an entire library.

## Custom Designs, Creative *Solutions*

Our experienced Sales Team and CAD Design department can create a custom layout targeting your specific needs with a comprehensive quote for the mobile system, shelving and accessories to suit your business application.



# QUALITY ENGINEERING sets SpacePro® apart!

## Multiple Track Designs

All SpacePro track designs incorporate tongue and groove rail connections to maintain proper rail alignment for smooth and easy carriage movement with minimal effort. From small surface mount track systems to raised level deck systems, SpacePro has the track to suit your needs.

## Solid Foundation

SpacePro deck systems utilize top grade 3/4" tongue and groove plywood providing a level, safe and substantial walking surface ideal for the floor covering of your choice.

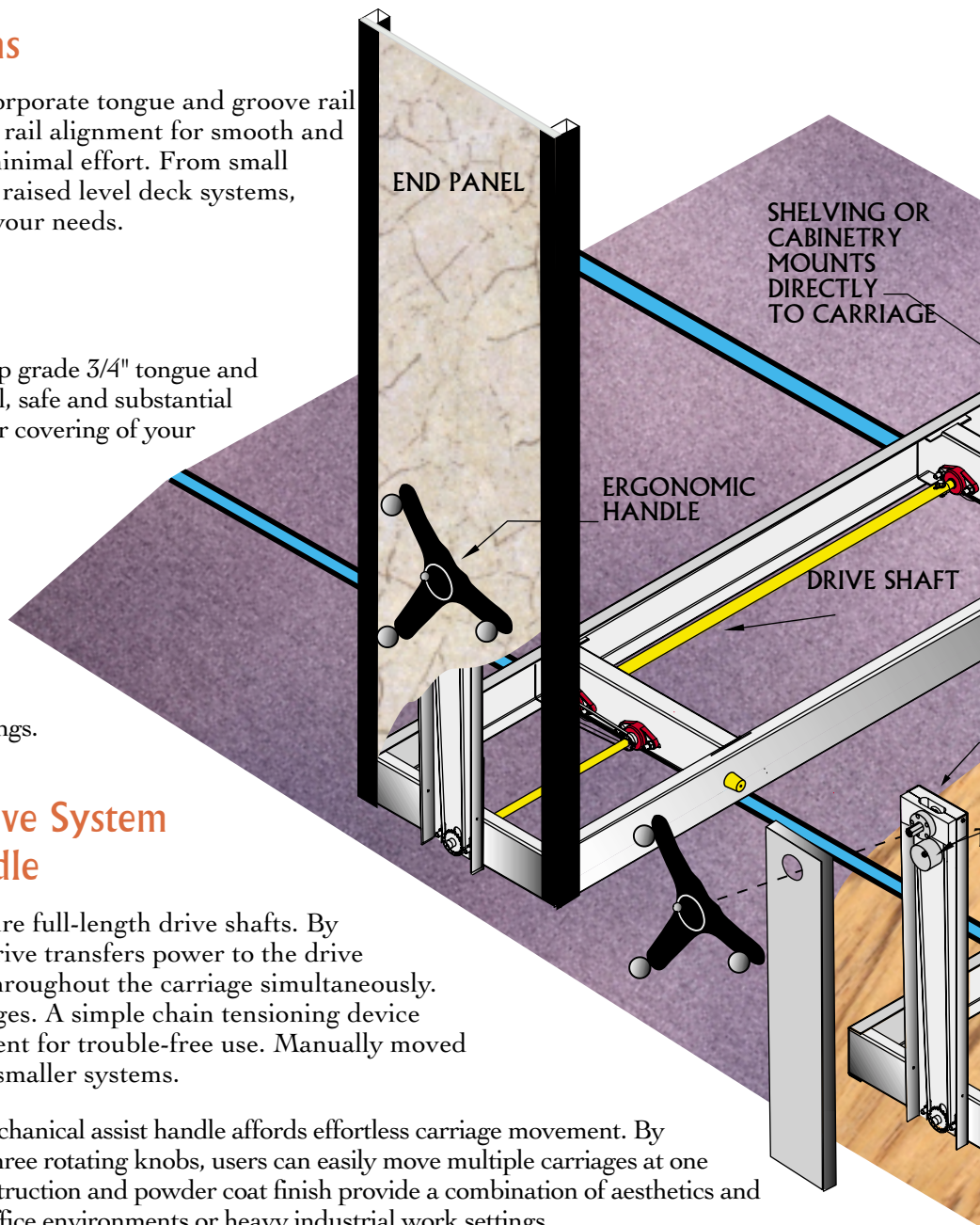
## Carriage Design

All carriages come complete with welded cross members that utilize factory installed and tested dual flange wheels housed in lifetime maintenance free bearings.

## Mechanical Assist Drive System with Ergonomic Handle

Mechanical assist systems feature full-length drive shafts. By turning the handle, the chain drive transfers power to the drive shaft moving all drive wheels throughout the carriage simultaneously. This prevents racking of carriages. A simple chain tensioning device provides infinite chain adjustment for trouble-free use. Manually moved carriages are also available for smaller systems.

SpacePro's uniquely designed mechanical assist handle affords effortless carriage movement. By grasping and turning one of the three rotating knobs, users can easily move multiple carriages at one time. The die cast aluminum construction and powder coat finish provide a combination of aesthetics and durability suitable for high-end office environments or heavy industrial work settings.



**Space  
PRO**®  
by American Filing Solutions



*Unique one-piece welded wheel channels create the industry's strongest carriage framework*



*Electrical Touchpad Control*

# DETAILS *make* the DIFFERENCE

## Electrical Drive System with Touchpad Control

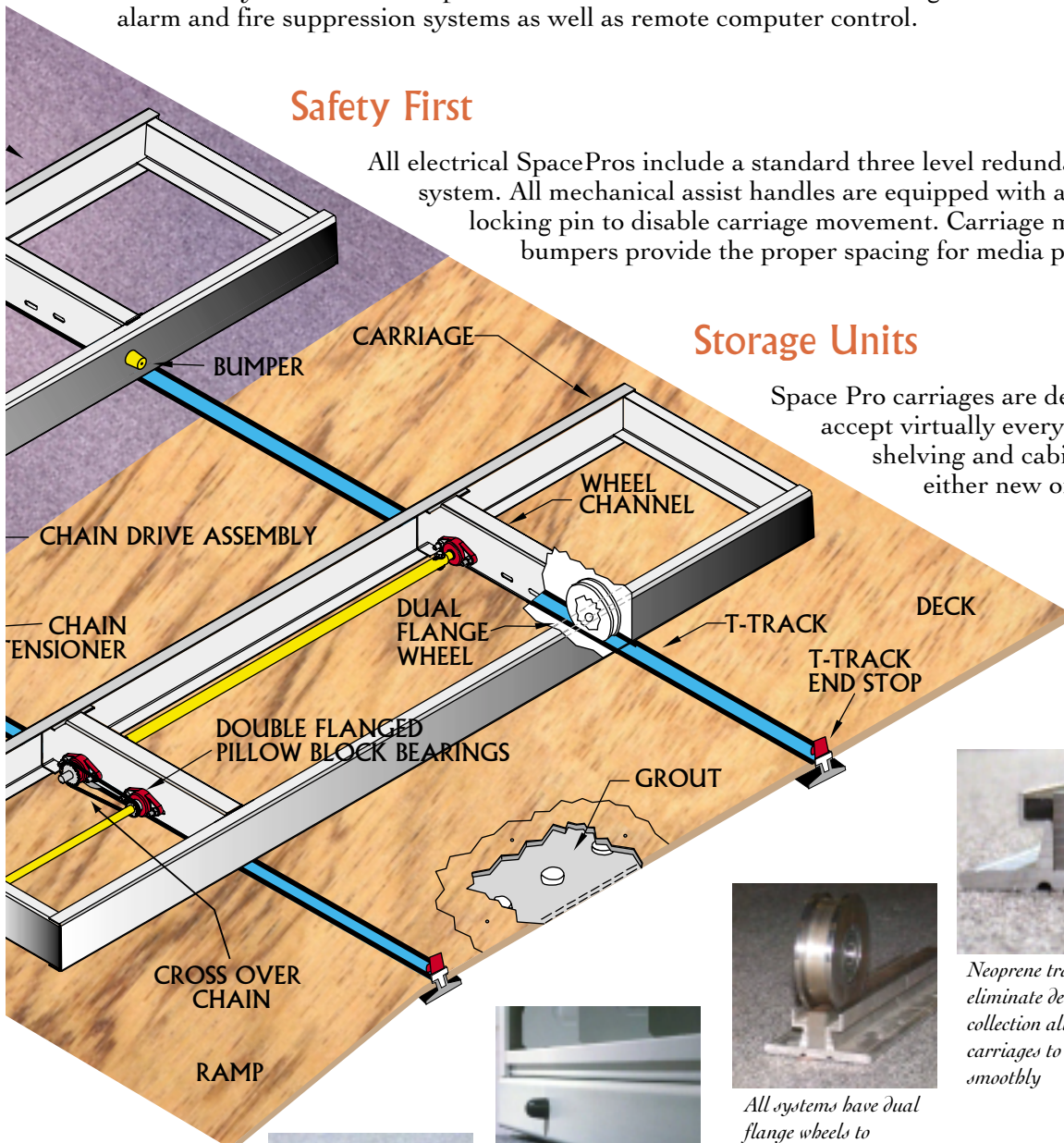
With this state of the art computerized electrical drive system, multiple carriages can be moved with just a touch. The advanced touchpad design provides oversized touch areas for "hands full" operation and an ADA friendly environment. Options include an interface with file tracking software, building alarm and fire suppression systems as well as remote computer control.

### Safety First

All electrical SpacePros include a standard three level redundant safety system. All mechanical assist handles are equipped with a safety locking pin to disable carriage movement. Carriage mounted bumpers provide the proper spacing for media protection.

### Storage Units

Space Pro carriages are designed to accept virtually every style of shelving and cabinetry, either new or existing.



*Neoprene track inserts eliminate debris collection allowing carriages to roll smoothly*



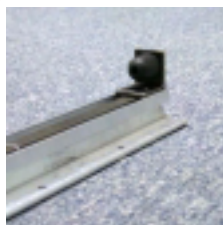
*All systems have dual flange wheels to eliminate carriage derailment*



*Carriage bumpers for media protection*



*Mechanical assist handle with push/pull safety pin*



*Track end stops*



**Schedule**  
Contract GS-00F-0043L

# LIMITLESS Applications

Hospitals  
 Clinics  
 Doctor and Dentist Offices  
 Law Firms  
 Banks  
 Courthouse Records  
 Law Enforcement Agencies  
 Schools  
 Universities  
 Libraries  
 Community Centers  
 Military Bases  
 Government Agencies  
 Human Resources  
 Museums  
 Manufacturing  
 Country Clubs  
 Warehouses  
 Retail  
 Laboratories  
 Automotive  
 Casinos

Flexible

Versatile

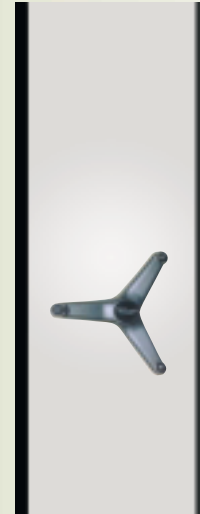
FUNCTIONAL

*If You Need to **Store It**,  
**SpacePro** will Hold It!*

Letter or Legal Files  
 X-Rays  
 Mammograms  
 Archives  
 Golf Bags  
 Engine Parts  
 Pharmaceuticals  
 Videos and CDs  
 Books and Binders  
 Microfilm  
 Microfiche  
 Computer Discs



**SpacePro**  
 end panel  
 options include  
 economical  
 pedestal covers,  
 Designer Edge,  
 ProEdge with  
 vinyl trim and  
 Radius Edge  
 with aluminum  
 trim. (L to R).

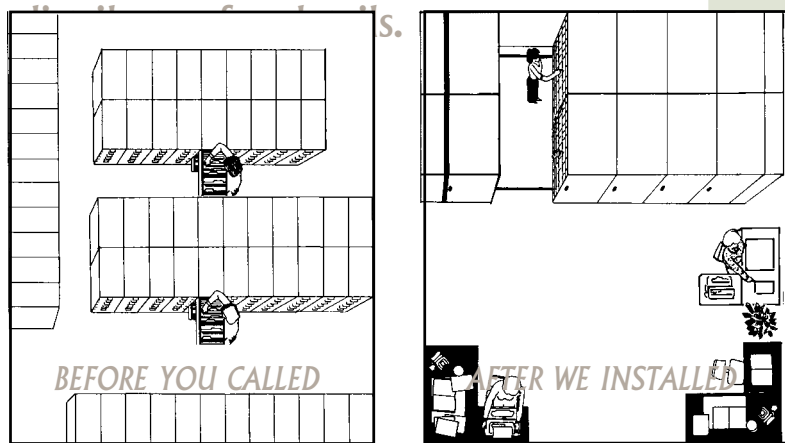


# AND IN THE END...

*More Space*  
*More Versatility*  
*More Value*

Large or small, **SpacePro** has the solution for your storage requirements.

By installing storage equipment on movable carriages (eliminating wasted aisles), you can double your storage capacity or free up valuable floor space for other facets of your operations. Consult your authorized **SpacePro**



*Providing the Service You Expect*

Mobile Systems Quik-Spec Specifications  
Manual Mobile Aisle Series

**3" — 1,000 LB. SERIES**  
**For systems up to 1000 lbs. per linear ft.**

**TRACKS**

- 1.0 System designed to utilize C, Low-Pro, T or Anti-Tip Tracks.
- 1.1 Shims (C-Track) or grout (T-Track, Anti-Tip Track) are provided for proper leveling to ensure smooth operation.
- 1.2 Low-Pro tracks may be secured to the floor with rawl type anchors or double-sided tape.
- 1.3 All track sections are designed with a tongue and groove lap connection between each rail joint. This provides a superior connection and proper alignment for smooth carriage movement.

**RAISED FLOOR DECKING**  
**(WHEN APPLICABLE)**

- 2.0 Decking to be constructed of  $\frac{3}{4}$ " high density cabinet grade plywood. Flame retardant decking is an option.
- 2.1 Decking shall support a minimum of 250 lbs. per sq. ft.
- 2.2 Decking to be installed flush and tight to the track.
- 2.3 Decking to be installed in a manner that will prevent warping, deformation and movement during normal use and operation.
- 2.4 Decking may be finished with floor covering as specified by end user.

**RAMPS**

- 3.0 Beveled ramp grade shall be ADA compliant.
- 3.1 Ramps constructed of  $\frac{3}{4}$ " plywood in 14", 18", or 24" width as determined by carriage length.

**CARRIAGES**

- 4.0 All carriages are of 3" high welded steel construction; carriage side members consist of 12 gauge welded steel and are capable of supporting 1000 lbs. per lineal carriage foot.
- 4.1 Carriage cross members are 12 gauge  $1\frac{1}{2}$ " x 3" welded "U" shaped steel channels.
- 4.2 Optional fixed carriages shall be of the same construction and height as movable carriages and shall be anchored to the floor for a complete, homogeneous system.
- 4.3 Carriage design allows shelving to be securely anchored to the top surface of all carriages.

**WHEELS**

- 5.0 All wheels to be a minimum of  $3\frac{1}{4}$ " in diameter, double flanged, precision ground, balanced and constructed from solid steel for smooth operation.

- 5.1 A minimum of four wheels is required per movable carriage.

**END PANELS**

- 6.0 All optional end panels are to be the full height and depth of the shelving ends.
- 6.1 Melamine or high pressure laminate covered end panels to be  $\frac{3}{4}$ " in thickness.
- 6.2 Optional laminates are available upon customer request.
- 6.3 Shelving closed end panels may be used as finished product.

**ATTACHMENT OF SHELVING**

- 7.0 Carriage construction shall be designed to allow numerous shelving designs to be securely anchored to the carriages. Shelving shall be secured to the carriages with special tek screws provided.

**QUALITY CONTROL**

- 8.0 Systems are checked at the factory to ensure high quality and uninterrupted field installation.

**INSTALLATION STANDARDS**

- 9.0 All parts and fasteners are provided to ensure proper and safe installation.
- 9.1 All mobile systems are to be installed by trained technicians.

**CLEAN UP & DOCUMENTATION**

- 10.0 All debris and excess materials resulting from installation shall be removed and the construction area left in a broom clean condition.
- 10.1 Additional Operators Manuals are available upon request.

*DATE: OCTOBER 1, 2003*  
*SPECIFICATIONS ARE SUBJECT TO CHANGE.*

Mobile Systems Quik-Spec Specifications  
1000 lb. LP3 Mechanical Assist Carriage

### TTRACK

1.0 Rail to be 1/2" wide x 3/4" high # 1018 cold rolled steel rail positioned in 6063T56 "T" aluminum extrusion. Rail to be machined on all sides.

1.1 Each track to have a minimum base width of 3".

1.2 Leveling screws provided to ensure proper leveling for smooth operation.

1.3 Track is secured to the floor with rawl type anchors (supplied) and grouted in place.

1.4 Track sections designed with tongue and groove lap connection between each rail joint providing a smooth rail surface for ease of carriage operation.

1.5 Rail and trough drawings are available for optional recessed rail installation to make system level with the existing floor if required.

1.6 The space between the rail and the aluminum housing will be filled with a neoprene material to prevent debris from affecting carriage movement.

1.7 C-Track, Low-Pro Track and Anti-Tip Track also available. Consult customer support for specifications.

### RAISED FLOOR DECK

2.0 Standard elevated deck constructed of 3/4" plywood. Flame retardant decking is an option.

2.1 Decking shall support a minimum of 250 lbs. per square foot.

2.2 Decking to be installed flush and tight to the track.

2.3 Deck to be installed in a manner that will prevent warping, deformation and movement during normal use and operation.

2.4 Deck may be covered with floor covering as specified by the end user.

### RAMPS

3.0 Beveled ramp grade shall be ADA compliant.

3.1 Ramps constructed of 3/4" plywood in 14", 18", or 24" width as determined by carriage length.

### CARRIAGE

4.0 Welded steel construction; carriage side members consist of 12 gauge welded steel capable of supporting 1,000 lbs per linear carriage foot.

4.1 Fixed carriages shall be of same construction and height as movable carriages and anchored to the rails for a complete, homogeneous system.

4.2 Necessary carriage splices shall be bolted type to maintain proper unit alignment.

4.3 Carriage cross members are 12 gauge welded U-shaped steel channels.

4.4 Carriage construction to allow shelving to be securely anchored to the carriages.

### WHEELS

5.0 All wheels to be a minimum of 3 1/4" in diameter, double flanged as required, precision ground, balanced and constructed from solid steel for smooth operation.

5.1 Each drive wheel will be fitted with two permanently sealed and shielded bearings housed in a self-aligning flanged pillow block having a dynamic load rating of 2,200 lbs. per bearing.

5.2 A minimum of four guide wheels is required per movable carriage.

### DRIVE SYSTEM

6.0 All mobile carriages shall be fitted with full length drive shafts.

6.1 All drive shafts shall be a minimum of 1 1/8" hollow steel and connect all wheels on drive side of carriage. All axles shall be solid steel and support the full load of the carriage.

6.2 Complete drive shaft/axle and wheel assemblies shall be secured by means of a mechanically retained coupling method eliminating any loose connections between shafts and axles and shall exhibit no play or looseness through the length of carriage.

6.3 The mechanical assist handle shall be of ergonomic design. The transfer of power from the handle to the drive shaft shall be direct drive and chain driven.

6.4 All mechanical assist systems are to be moved by means of a chain and sprocket reduction drive system.

6.5 Mechanical assist tower attaching points shall be created using a CAM/CNC method to provide precise alignment for attachment to the carriage.

6.6 Dual control options are available for operation of mobile carriages from either or both ends.

6.7 All mechanical assist systems are equipped with a push-pull safety parking brake as a standard feature.

### DRIVE EFFORT

7.0 Gear ratio to be determined by carriage length and weight; factory calculates correct drive effort for each system considering length, weight loads and number of carriages to be moved.

7.1 There is no "play" in the drive handle and the carriage will stop without drifting when operation of the actuator is terminated on all leveled systems.

### END PANELS

8.0 All optional end panels are to be full height and depth of the shelving ends plus carriage height.

8.1 Melamine or high-pressure laminate covered end panels to be 3/4" in thickness.

8.2 Optional laminates are available upon customer request.

8.3 Steel chain covers or end panels may be supplied as specified. They shall cover only the exposed chain drive mechanism and mechanical assist tower or be the full height and depth of upright.

### SAFETY FEATURES

9.0 All carriages can be equipped with a safety parking brake.

9.1 Carriage end stops will be provided for systems without stationary units.

9.2 A safety spacing is provided between end panels through the use of 1" carriage bumpers; protects fingers of those using the system and provides a positive stop for all carriages.

### ATTACHMENT OF SHELVING

10.0 Carriage construction shall be designed to allow all shelving types to be securely anchored to the carriages. Shelving to be secured to the carriage with tek screws provided.

### SYSTEM ACCESSORIES / OPTIONS

11.0 Optional security key lock systems to secure one carriage or entire system.

11.1 Back panels (for stationary units), end caps and misc. finishing pieces are available.

### QUALITY CONTROL

12.0 Systems are checked at the factory to ensure high quality and uninterrupted field installation.

12.1 All parts and fasteners are provided to ensure proper and safe installation.

12.2 All mobile systems are to be installed by trained technicians.

### INSTALLATION STANDARDS

13.0 Install, level and grout tracks directly to a properly prepared floor.

13.1 Install carriages, end panels (if applicable) and shelving as shown on the drawings, complete and ready for owner use.

### CLEAN UP & DOCUMENTATION

14.0 All debris and excess materials resulting from installation shall be removed and the construction area left in a broom clean condition.

Additional Operators Manuals are available upon request.

DATE: OCTOBER 1, 2003  
SPECIFICATIONS ARE  
SUBJECT TO CHANGE



Mobile Systems Quik-Spec Specifications  
1000 lb. HP5 Mechanical Assist Carriage

### T-TRACK

1.0 Rail to be 1/2" wide x 3/4" high # 1018 cold rolled steel rail positioned in 6063T56 "T" aluminum extrusion. Rail to be machined on all sides.

1.1 Each track to have a minimum base width of 3".

1.2 Leveling screws provided to ensure proper leveling for smooth operation.

1.3 Track is secured to the floor with rawl type anchors (supplied) and grouted in place

1.4 Track sections designed with tongue and groove lap connections between each rail joint providing a smooth rail surface for ease of carriage operation.

1.5 Rail and trough drawings are available for optional recessed rail installation to make system level with the existing floor if required.

1.6 The space between the rail and the aluminum housing will be filled with a neoprene material to prevent debris from affecting carriage movement.

1.7 C-Track, Low-Pro Track and Anti-Tip Track also available. Consult customer support for specifications.

### RAISED FLOOR DECK

2.0 Standard elevated deck constructed of 3/4" plywood. Flame retardant decking is an option.

2.1 Decking shall support a minimum of 250 lbs. per square foot.

2.2 Decking to be installed flush and tight to the track.

2.3 Deck to be installed in a manner that will prevent warping, deformation and movement during normal use and operation.

2.4 Deck may be covered with floor covering as specified by the end user.

### RAMPS

3.0 Beveled ramp grade shall be ADA compliant.

3.1 Ramps constructed of 3/4" plywood in 14", 18", or 24" width as determined by carriage length.

### CARRIAGE

4.0 Welded steel construction; carriage side members consist of a 5", 12 gauge C-channel design, capable of supporting minimum 1,000 lbs. per linear carriage foot.

4.1 Fixed carriages shall be of same construction and height as movable carriages and anchored to the rails for a complete, homogeneous system.

4.2 Necessary carriage splices shall be a bolted type to maintain proper unit alignment

4.3 Carriage cross members are 12 gauge, welded U-shaped steel channels with extra reinforcement when specified for X-Ray shelving.

4.4 Carriage construction to allow shelving to be securely anchored to the carriages.

### WHEELS

5.0 All wheels to be a minimum of 5" in diameter, double flanged as required, precision ground, balanced and constructed from solid steel for smooth operation.

5.1 Each drive wheel will be fitted with two permanently sealed and shielded bearings housed in a self-aligning flanged pillow block having a dynamic load rating of 2,200 lbs. per bearing.

5.2 A minimum of four guide wheels is required per movable carriage.

### DRIVE SYSTEM

6.0 All mobile carriages shall be fitted with full length drive shafts.

6.1 All drive shafts shall be a minimum of 1 1/8" hollow steel tubing and connect all wheels on drive side of carriage. All axles shall be solid steel and support the full load of bearings.

6.2 Complete drive shaft /axle and wheel assemblies shall be secured by means of a mechanically retained coupling method eliminating any loose connections between shafts and axles and shall exhibit no play or looseness through the length of carriage.

6.3 The mechanical assist handle shall be of ergonomic design. The transfer of power from the handle to the drive shaft shall be direct drive and chain driven.

6.4 All mechanical assist systems are to be moved by means of a chain and sprocket reduction drive system.

6.5 Mechanical assist tower attaching points shall be created using a CAM/CNC method to provide precise alignment for attachment to the carriage.

6.6 Dual control options are available for operation of mobile carriages from either or both ends.

6.7 All mechanical assist systems are equipped with a push-pull safety parking brake as a standard feature.

### DRIVE EFFORT

7.0 Gear ratio to be determined by carriage length and weight; factory calculates correct drive effort for each system considering length, weight loads and number of carriages to be moved.

7.1 There shall be no "play" in the drive handle and the carriage shall stop without drifting when operation of the actuator is terminated on all leveled systems.

### END PANELS

8.0 All optional end panels are to be the full height and depth of the shelving ends plus carriage height.

8.1 Melamine or high pressure laminate covered end panels to be 3/4" in thickness.

8.2 Optional laminates are available upon customer request.

8.3 Steel chain covers or end panels may be supplied as specified. They shall cover only the exposed chain drive mechanism and mechanical assist tower or be the full height and depth of upright.

### SAFETY FEATURES

9.0 All carriages are equipped with a safety parking brake

9.1 Carriage end stops will be provided for systems without stationary units.

9.2 A safety spacing is provided between end panels through the use of 1" carriage bumpers; protects fingers of those using the system and provides a positive stop for all carriages.

### ATTACHMENT OF SHELVING

10.0 Carriage construction shall be designed to allow all shelving types to be securely anchored to the carriages. Shelving to be secured to the carriage with (enclosed) special tek screws

### SYSTEM ACCESSORIES / OPTIONS

11.0 Optional security key lock to secure one carriage or entire system.

11.1 Back panels (for stationary units), end caps and misc. finishing pieces are available.

11.2 Optional label holders show aisle contents.

### QUALITY CONTROL

12.0 Systems are checked at the factory to ensure high quality and an uninterrupted field installation.

12.1 All parts and fasteners are provided to ensure proper and safe installation.

12.2 All mobile systems are to be installed by trained technicians.

### INSTALLATION STANDARDS

13.0 Install, level and grout tracks directly to a properly prepared floor.

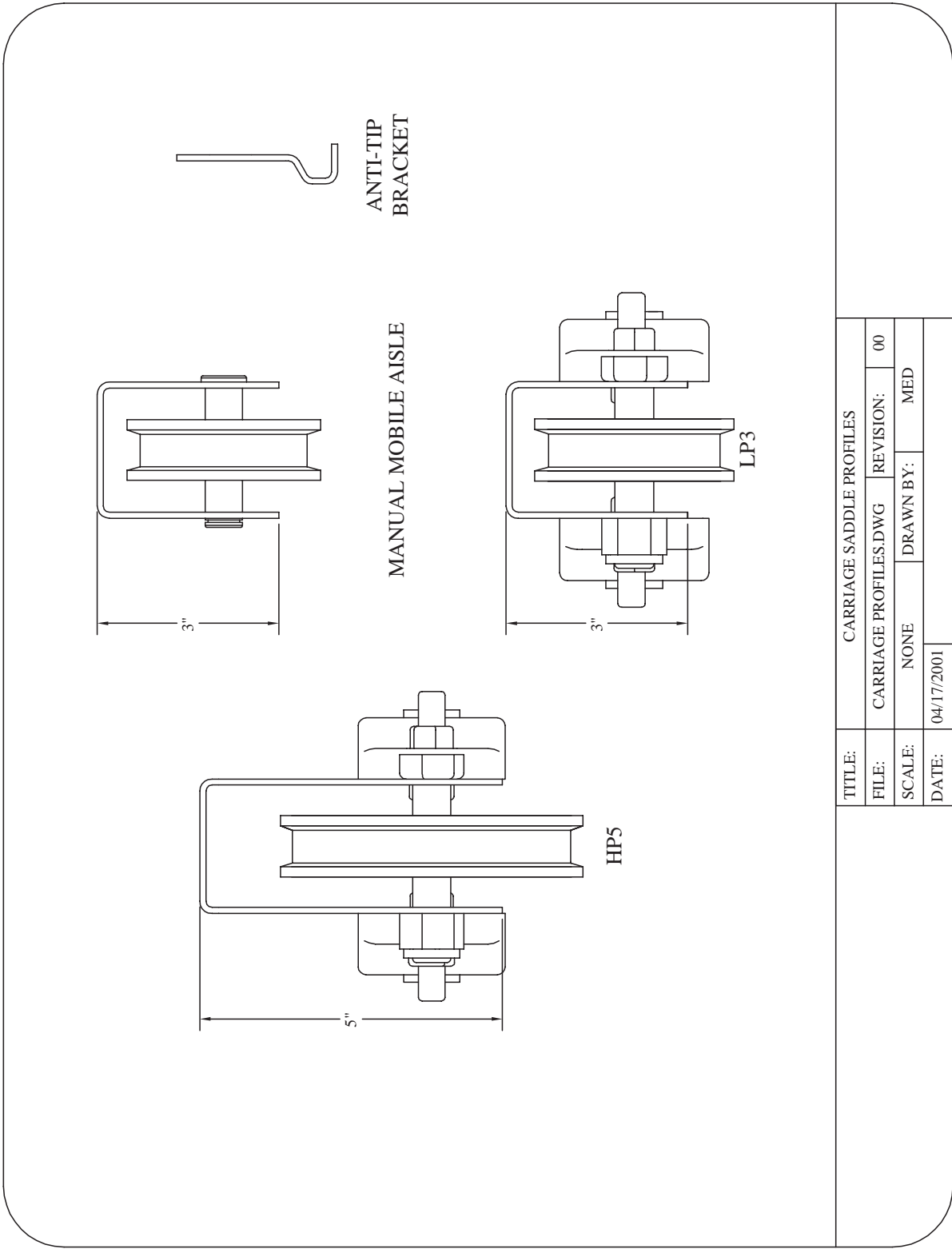
13.1 Install carriages, end panels (if applicable) and shelving as shown on the drawings, complete and ready for owner use.

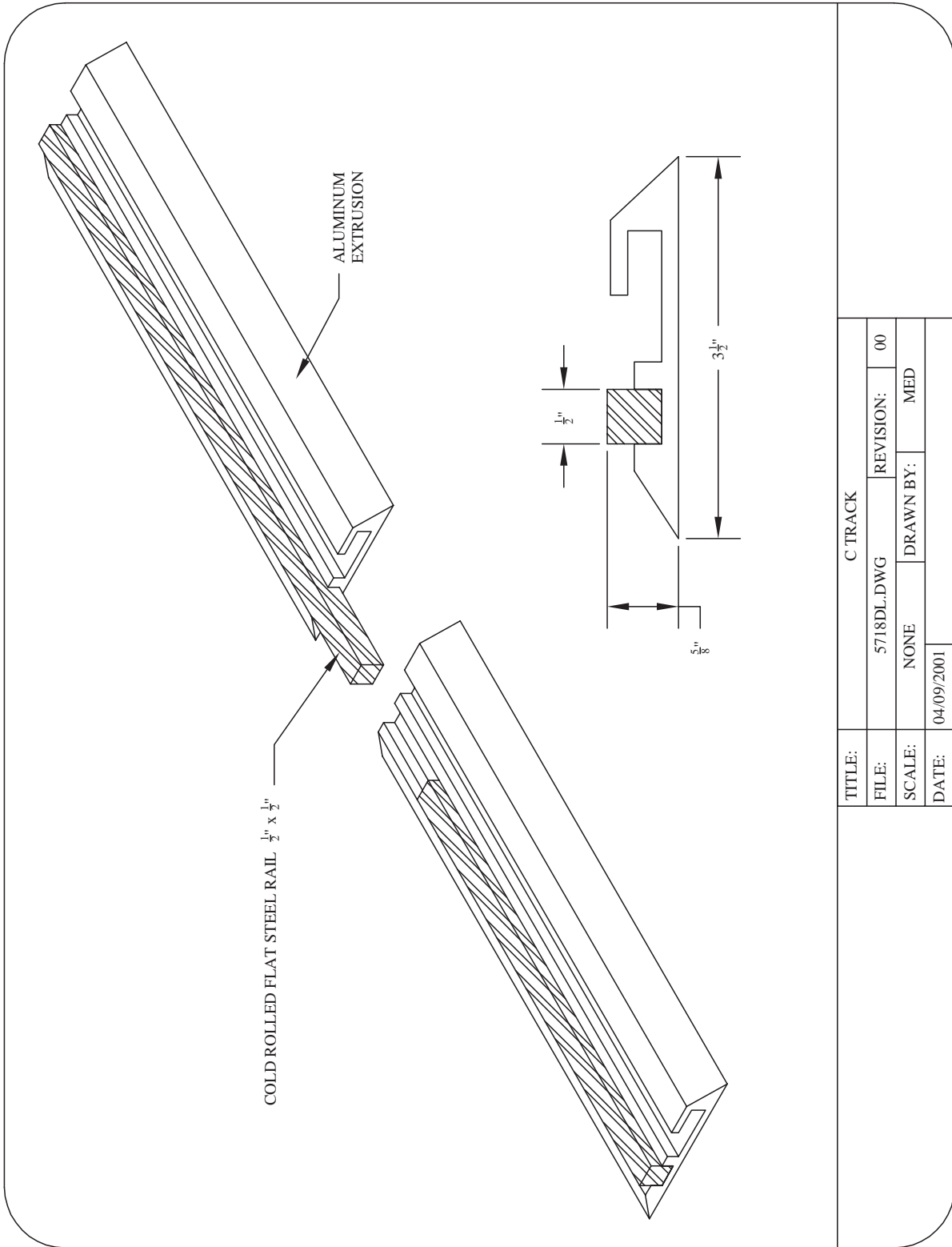
### CLEAN UP & DOCUMENTATION

14.0 All debris and excess materials resulting from installation shall be removed and the construction area left in a broom clean condition.

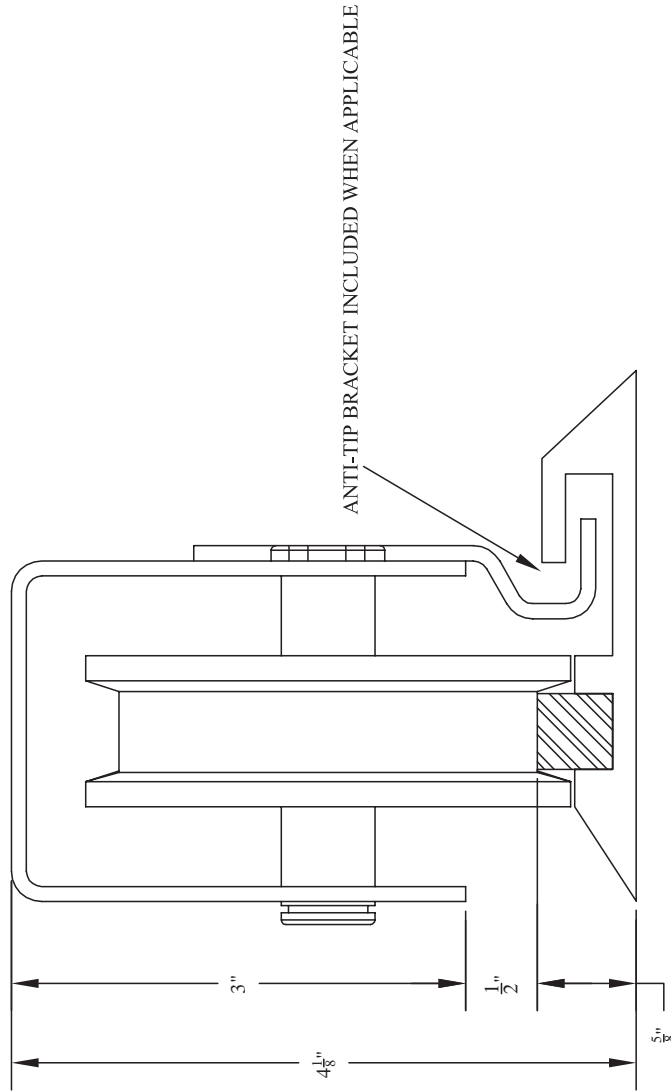
Additional Operator Manuals are available upon request.

DATE: OCTOBER 1, 2003  
SPECIFICATIONS ARE  
SUBJECT TO CHANGE



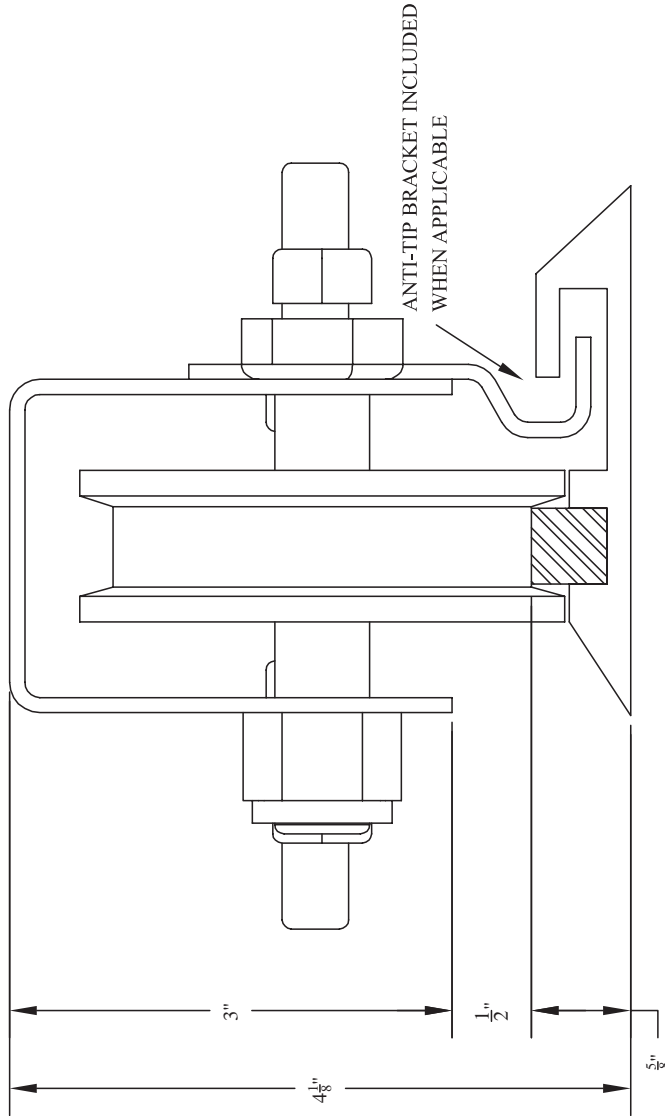


C TRACK			
TITLE:	5718DL.DWG	REVISION:	00
FILE:	NONE	DRAWN BY:	MED
SCALE:		DATE:	04/09/2001



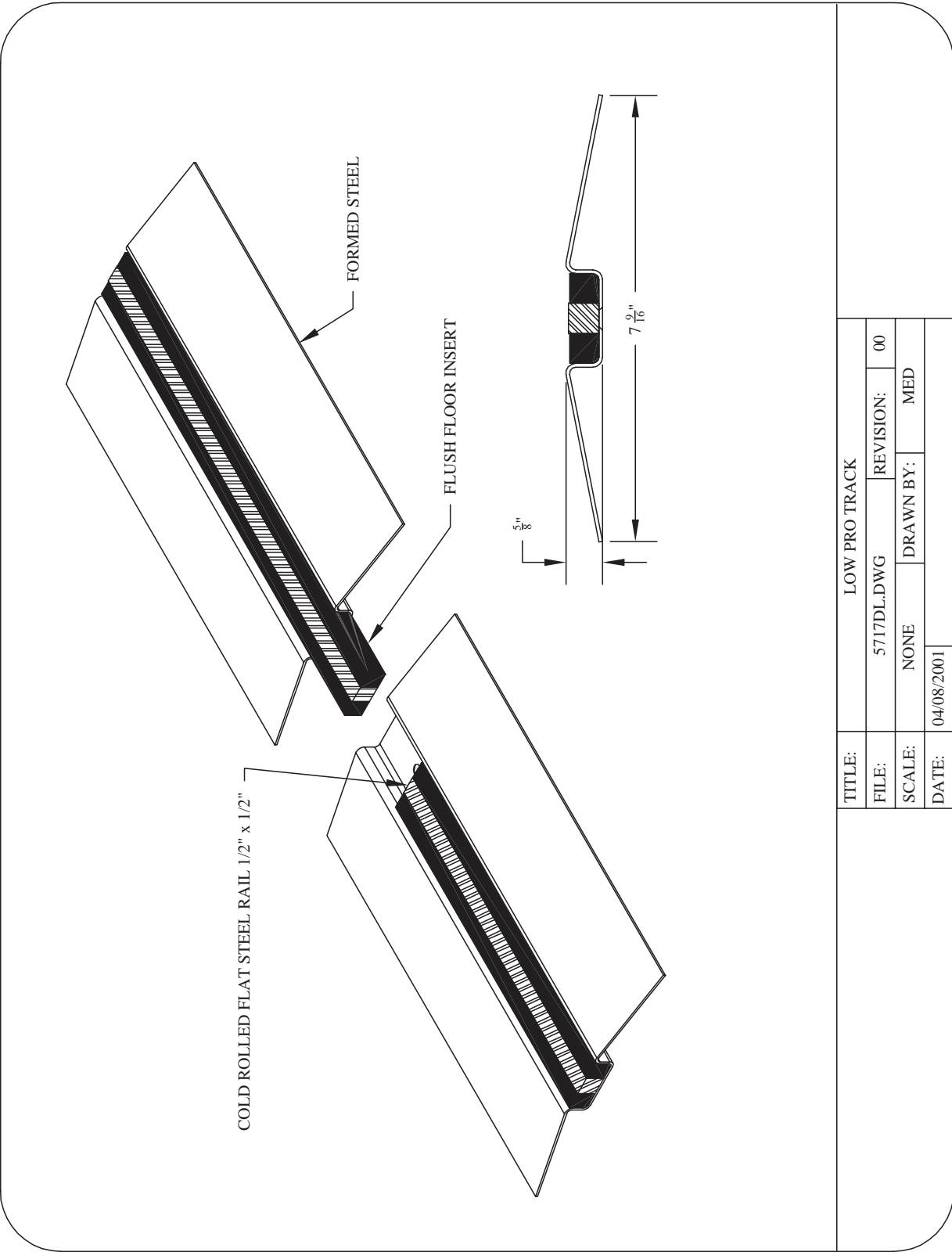
**3" Carriage Manual Mobile  
and  
Lateral Carriages after 4/15/03**

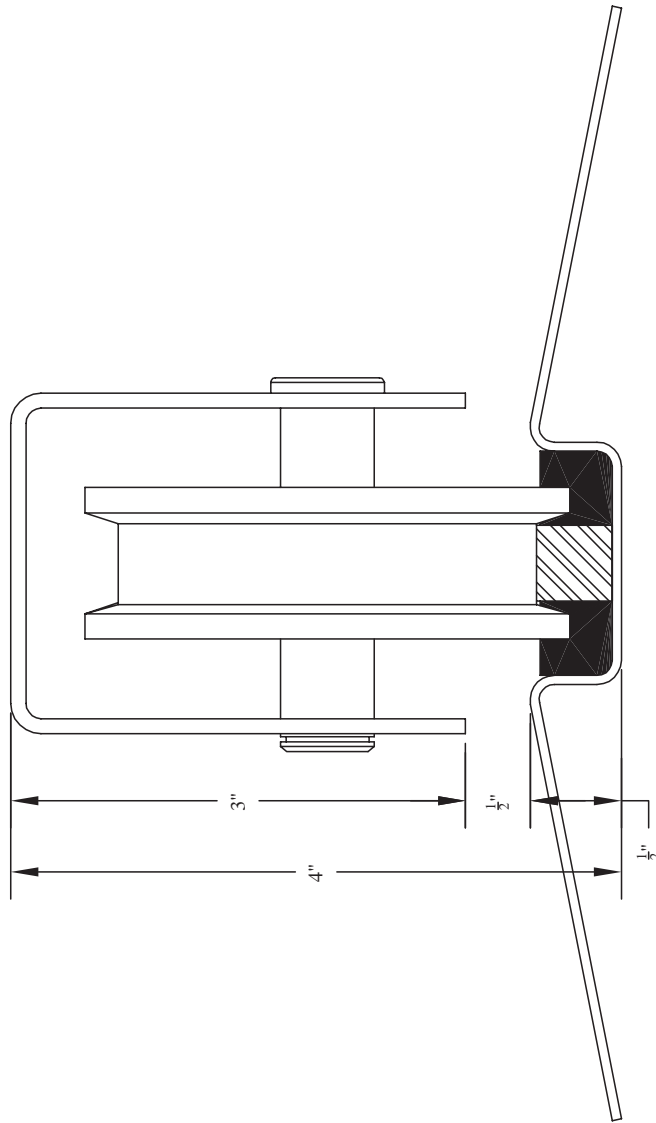
TITLE:	6001DL - C TRACK WITH 3" WHEELS		
FILE:	6001DL-C.DWG	REVISION:	00
SCALE:	NONE	DRAWN BY:	MED
DATE:	04/09/2001		



Mechanical Assist LP3 Carriage

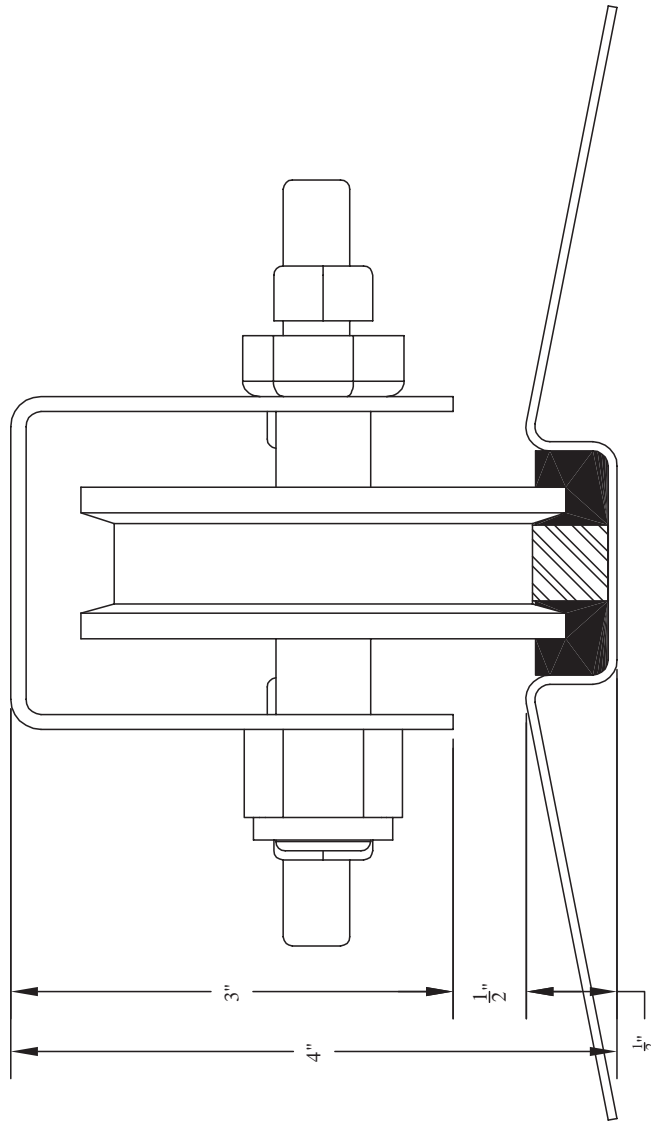
TITLE:	6002DL - LP3 CARRIAGE - C TRACK		
FILE:	6002DL-C.DWG	REVISION:	00
SCALE:	NONE	DRAWN BY:	MED
DATE:	04/09/2001		





**Manual Mobile**

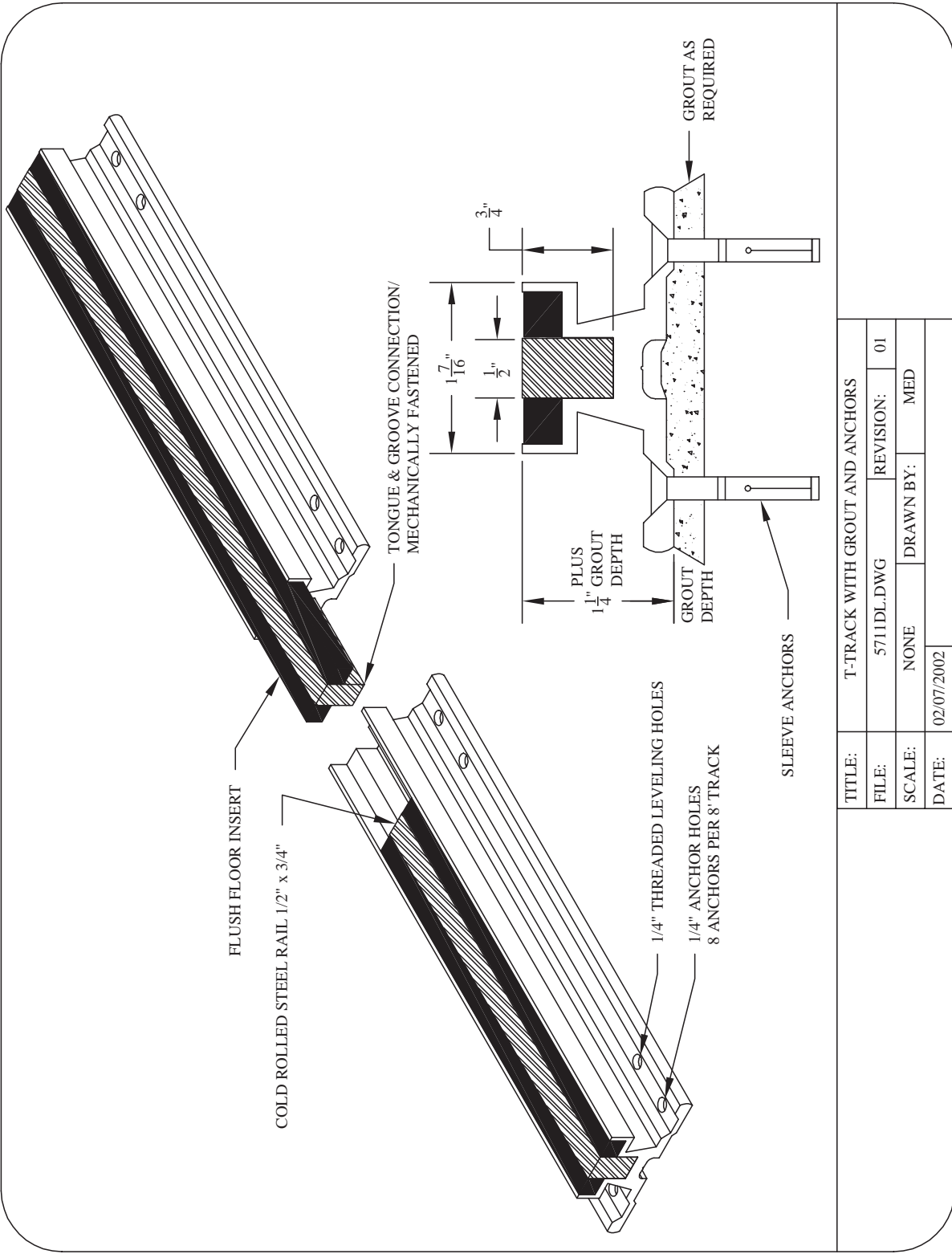
TITLE:	6001DL - LOW-PRO TRACK WITH 3" WHEELS		
FILE:	6001DL-L.DWG	REVISION:	00
SCALE:	NONE	DRAWN BY:	MED
DATE:	04/08/2001		



Mechanical Assist LP3 Carriage

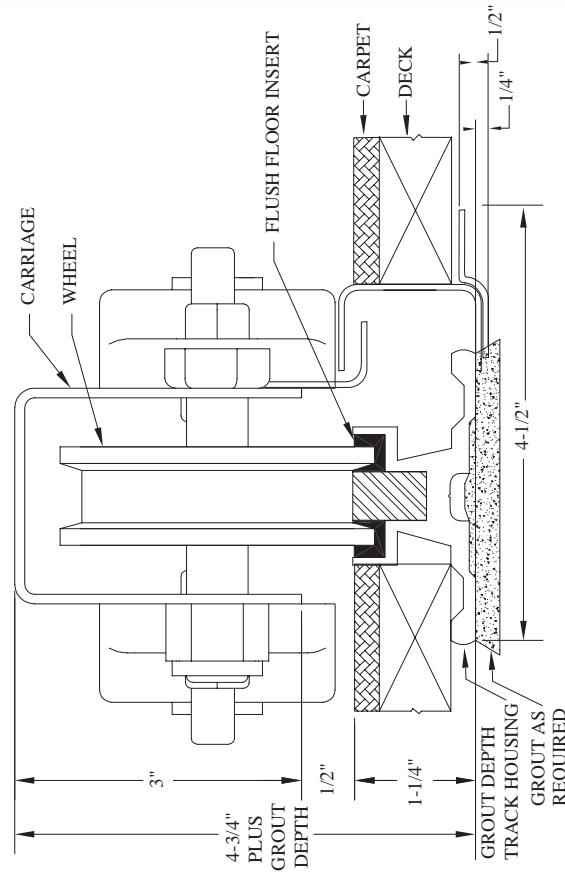
TITLE:	6002DL - LP3 CARRIAGE - LOW-PRO TRACK		
FILE:	6002DL-L.DWG	REVISION:	00
SCALE:	NONE	DRAWN BY:	MED
DATE:	04/08/2001		



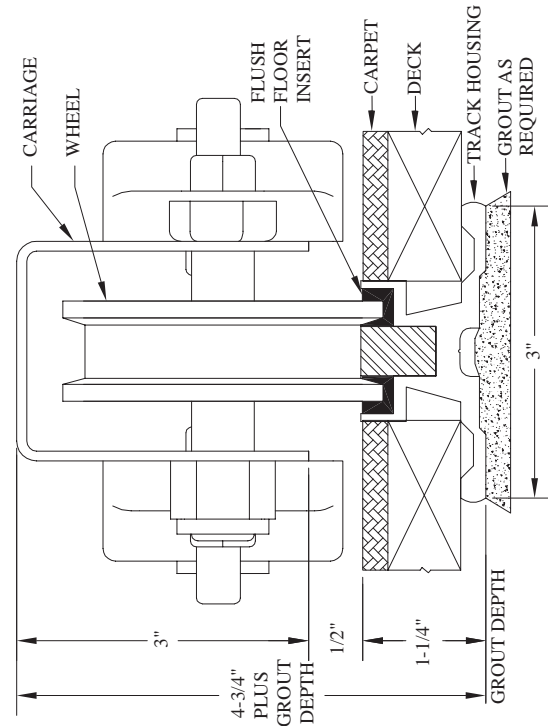


TITLE:	T-TRACK WITH GROUT AND ANCHORS		
FILE:	5711DL.DWG	REVISION:	01
SCALE:	NONE	DRAWN BY:	MED
DATE:	02/07/2002		

**ANTI-TIP TRACK PROFILE**

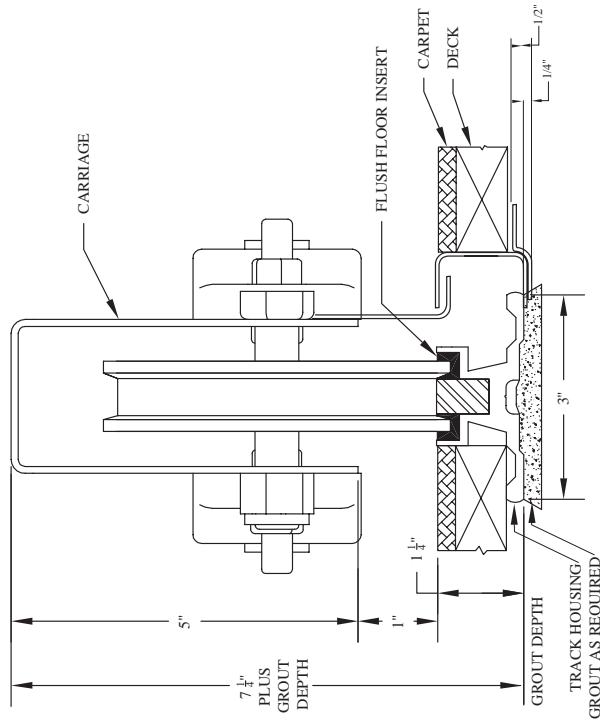


**T-TRACK PROFILE**

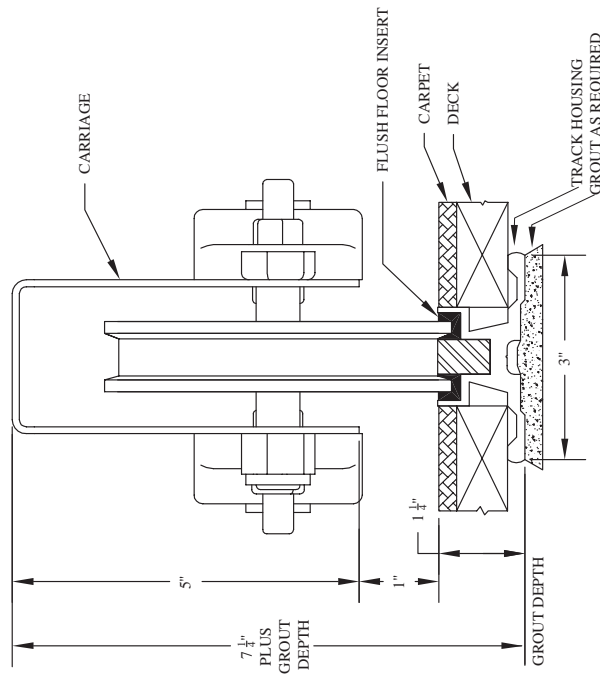


TITLE:	6003DL - LP3 CARRIAGE - T TRACK WITH GROUT		
FILE:	6003DL.DWG	REVISION:	00
SCALE:	NONE	DRAWN BY:	MED
DATE:	04/17/2001		

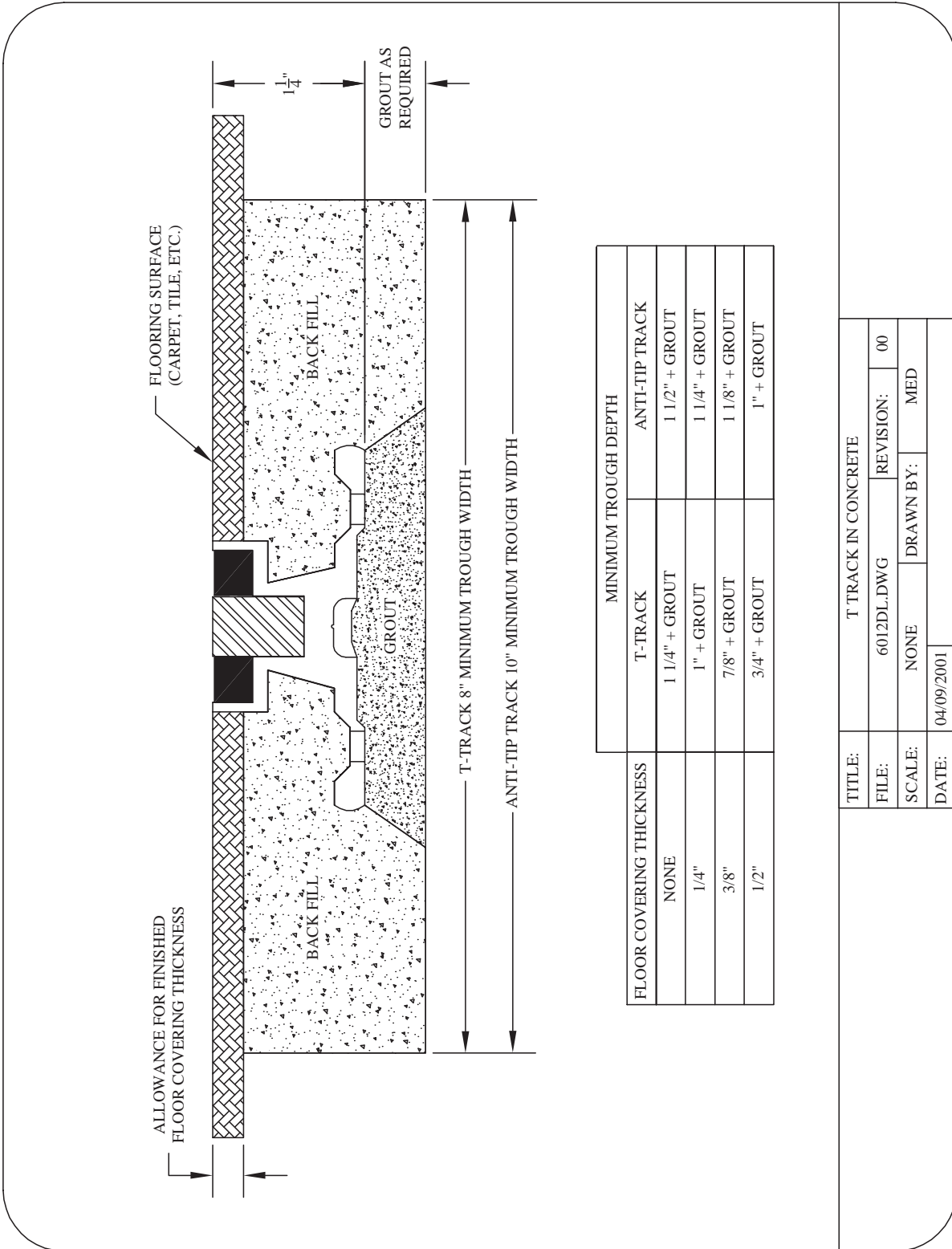
ANTI-TIP TRACK PROFILE

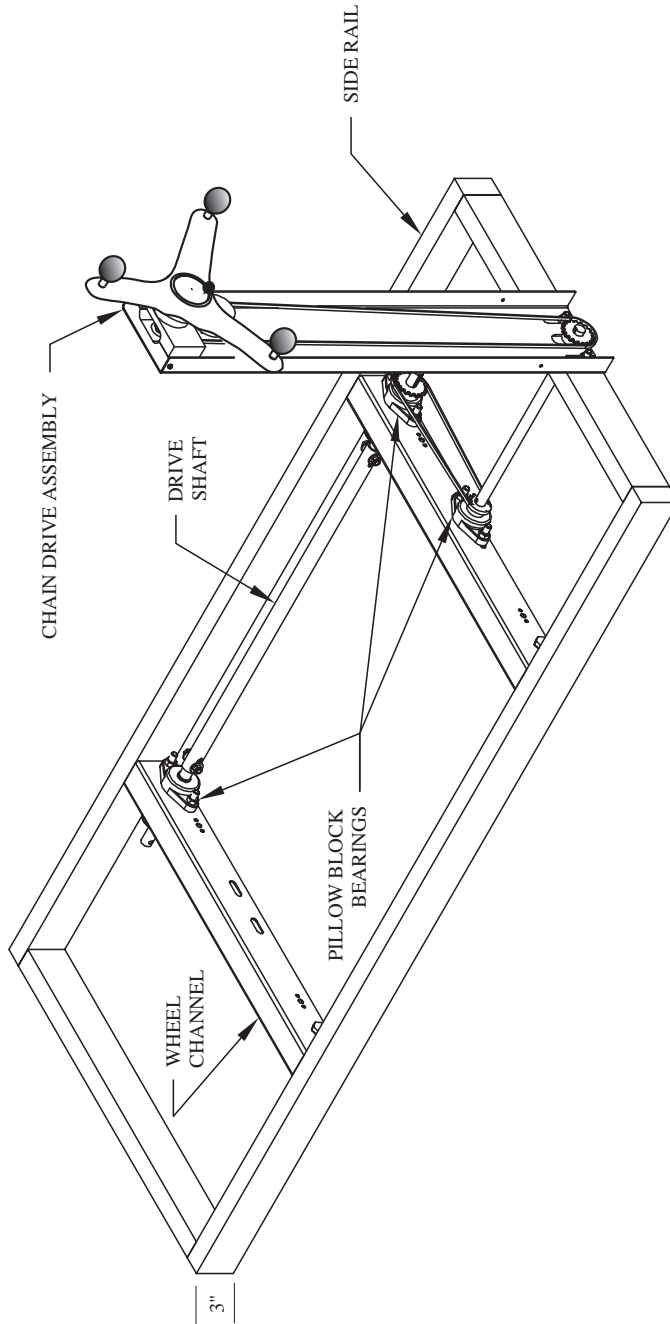


T-TRACK PROFILE

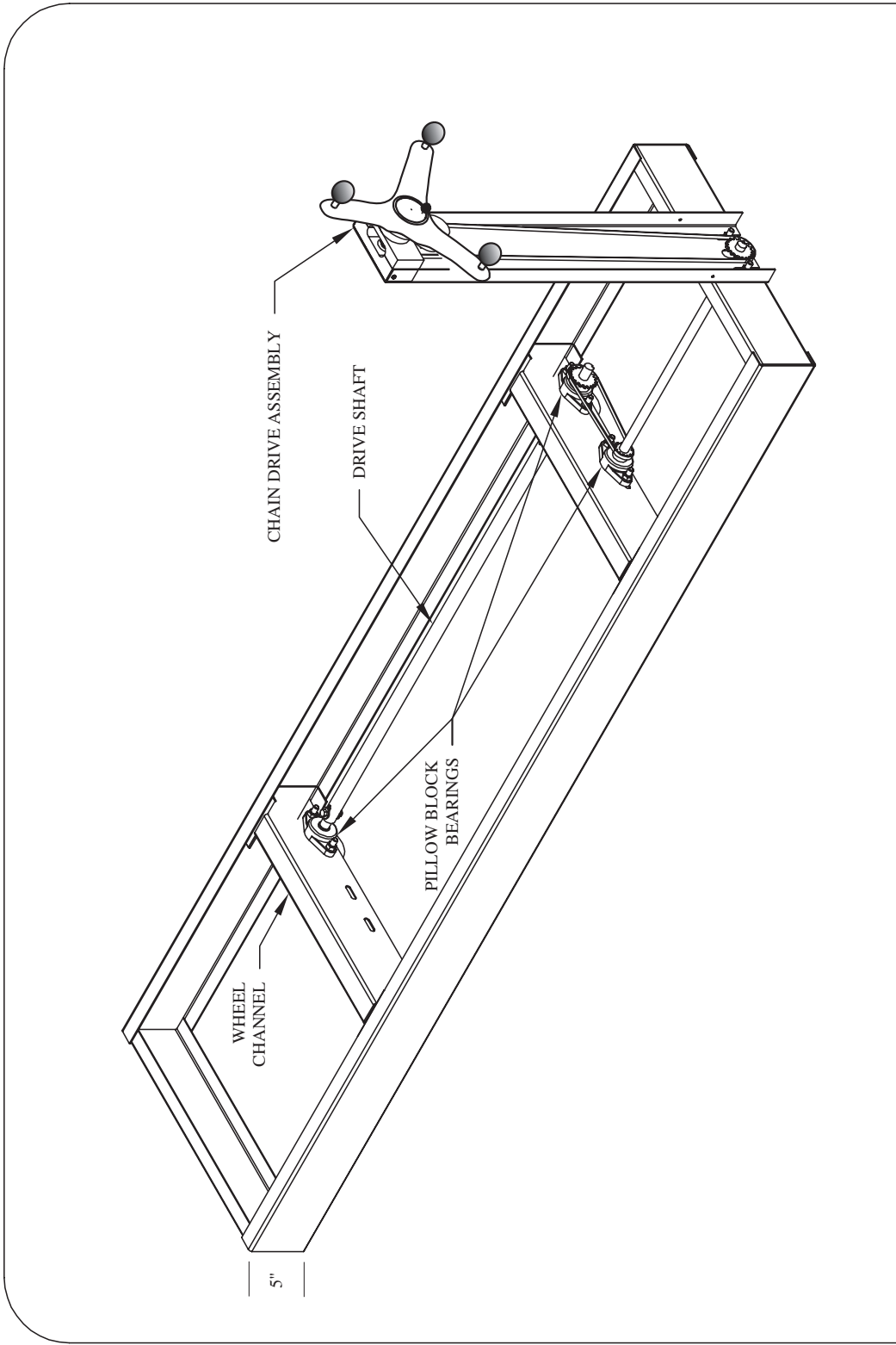


TITLE:	6004DL - HP5 CARRIAGE - T TRACK WITH GROUT		
FILE:	6004DL.DWG	REVISION:	00
SCALE:	NONE	DRAWN BY:	MED
DATE:	04/09/2001		

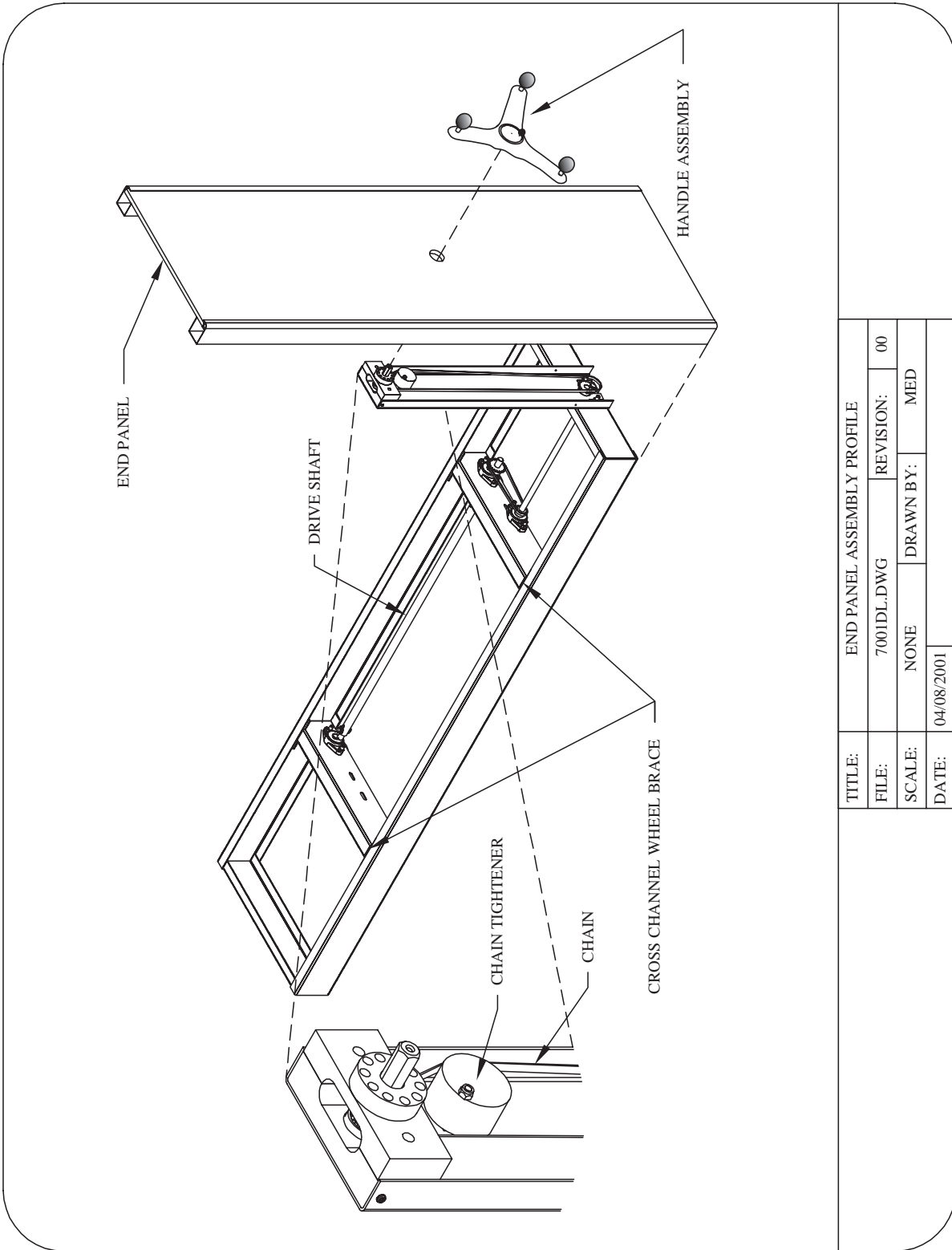




TITLE:	LP3 CARRIAGE		
FILE:	7004DL.DWG	REVISION:	00
SCALE:	NONE	DRAWN BY:	MED
DATE:	04/08/2001		



TITLE:	HP5 CARRIAGE		
FILE:	7005DL.DWG	REVISION:	00
SCALE:	NONE	DRAWN BY:	MED
DATE:	04/08/2001		



TITLE:	END PANEL ASSEMBLY PROFILE		
FILE:	700IDL.DWG	REVISION:	00
SCALE:	NONE	DRAWN BY:	MED
DATE:	04/08/2001		